

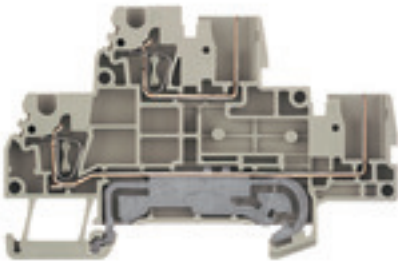
**ZDT 2.5/2 DU-PE****Weidmüller Interface GmbH & Co. KG**

Klingenbergstraße 26

D-32758 Detmold

Germany

www.weidmueller.com



Some applications demand for a pluggable, modular solution to be more flexible or to facilitate the installation. Where complete functional units have to be prefabricated or replaced, modular and flexible connection systems are required. Our pluggable terminal blocks can be quickly assembled and are completely factory tested.

**General ordering data**

Version	Z-series, Double-tier terminal, Rated cross-section: 2.5 mm <sup>2</sup> , Tension-clamp connection, dark beige
Order No.	<a href="#">1815160000</a>
Type	ZDT 2.5/2 DU-PE
GTIN (EAN)	4032248340781
Qty.	50 pc(s).

Creation date March 12, 2024 3:13:06 PM CET

Catalogue status 09.03.2024 / We reserve the right to make technical changes.

**ZDT 2.5/2 DU-PE****Weidmüller Interface GmbH & Co. KG**

Klingenbergstraße 26

D-32758 Detmold

Germany

www.weidmueller.com

**Technical data****Dimensions and weights**

Depth	52 mm	Depth (inches)	2.047 inch
Depth including DIN rail	52.5 mm	Height	80.5 mm
Height (inches)	3.169 inch	Width	5.1 mm
Width (inches)	0.201 inch	Net weight	13.71 g

**Temperatures**

Storage temperature	-25 °C...55 °C	Continuous operating temp., min.	-50 °C
Continuous operating temp., max.	120 °C		

**Material data**

Material	Wemid	Colour	dark beige
UL 94 flammability rating	V-0		

**System specifications**

Version	2 tension-clamp connections - 2 plug-in connections, pluggable, With PE connection	End cover plate required	Yes
Number of levels	2	Number of clamping points per level	4
Levels cross-connected internally	No	PE connection	Yes
Rail	TS 35		

**Additional technical data**

Explosion-tested version	No	Open sides	right
Type of mounting	Snap-on		

**CSA rating data**

Certificate number (cCSAus)	154685-1460993	Current size C (cCSAus)	20 A
Current size D (cCSAus)	5 A	Voltage size C (cCSAus)	300 V
Voltage size D (cCSAus)	600 V	Wire cross section max. (cCSAusX)	12 AWG
Wire cross section min. (cCSAusX)	26 AWG		

**Conductors for clamping (additional connection)**

Conductor cross-section, flexible plus plastic collar DIN 46228/1, further connection, max. 2.5 mm<sup>2</sup>

**Conductors for clamping (rated connection)**

Blade size	0.6 x 3.5 mm
Clamping range, max.	4 mm <sup>2</sup>
Clamping range, min.	0.13 mm <sup>2</sup>
Connection direction	top
Gauge to IEC 60947-1	A2
Number of connections	4
Stripping length	10 mm

## ZDT 2.5/2 DU-PE

**Weidmüller Interface GmbH & Co. KG**  
 Klingenbergstraße 26  
 D-32758 Detmold  
 Germany

www.weidmueller.com

## Technical data

Tube length for wire-end ferrule with plastic collar DIN 46228/4	Cross-section for conductor connection	nominal	0.5 mm <sup>2</sup>	
		min.	6 mm	
		max.	10 mm	
	Cross-section for conductor connection	nominal	0.75 mm <sup>2</sup>	
		min.	6 mm	
		max.	12 mm	
	Cross-section for conductor connection	nominal	1 mm <sup>2</sup>	
		min.	6 mm	
		max.	12 mm	
	Cross-section for conductor connection	nominal	1.5 mm <sup>2</sup>	
		min.	8 mm	
		max.	12 mm	
	Cross-section for conductor connection	nominal	2.5 mm <sup>2</sup>	
		min.	8 mm	
		max.	12 mm	
Tube length for wire-end ferrule without plastic collar DIN 46228/1	Cross-section for conductor connection	nominal	0.5 mm <sup>2</sup>	
		nominal	10 mm	
	Cross-section for conductor connection	nominal	0.75 mm <sup>2</sup>	
		nominal	10 mm	
	Cross-section for conductor connection	nominal	1 mm <sup>2</sup>	
		nominal	10 mm	
	Cross-section for conductor connection	nominal	1.5 mm <sup>2</sup>	
		min.	10 mm	
		max.	12 mm	
	Cross-section for conductor connection	nominal	2.5 mm <sup>2</sup>	
		min.	10 mm	
		max.	12 mm	
	Type of connection	Tension-clamp connection		
	Wire connection cross section AWG, max.	AWG 12		
	Wire connection cross section AWG, min.	AWG 26		
Wire connection cross section, finely stranded, max.	4 mm <sup>2</sup>			
Wire connection cross section, finely stranded, min.	0.5 mm <sup>2</sup>			
Wire connection cross-section, finely stranded with wire-end ferrules DIN 46228/1, max.	2.5 mm <sup>2</sup>			
Wire connection cross-section, finely stranded with wire-end ferrules DIN 46228/1, min.	0.5 mm <sup>2</sup>			
Wire connection cross-section, finely stranded with wire-end ferrules DIN 46228/4, max.	2.5 mm <sup>2</sup>			
Wire connection cross-section, finely stranded with wire-end ferrules DIN 46228/4, min.	0.5 mm <sup>2</sup>			
Wire connection cross-section, solid core, max.	4 mm <sup>2</sup>			
Wire connection cross-section, solid core, min.	0.5 mm <sup>2</sup>			

### General

Rail	TS 35	Standards	IEC 61984, In accordance with IEC 60947-7-1
Wire connection cross section AWG, max.	AWG 12	Wire connection cross section AWG, min.	AWG 26

Creation date March 12, 2024 3:13:06 PM CET

**ZDT 2.5/2 DU-PE**

**Weidmüller Interface GmbH & Co. KG**  
 Klingenbergstraße 26  
 D-32758 Detmold  
 Germany

www.weidmueller.com

**Technical data**

**Rating data**

Rated cross-section	2.5 mm <sup>2</sup>	Rated voltage	500 V
Rated voltage to adjoining terminal	500 V	Max. voltage of clamp support & pluggable system	690 V
Rated DC voltage	500 V	Rated current	24 A
Current at maximum wires	24 A	Standards	IEC 61984, In accordance with IEC 60947-7-1
Volume resistance according to IEC 60947-7-x	1.33 mΩ	Rated impulse withstand voltage	6 kV
Rated impulse withstand voltage to adjacent terminal	6 kV	Power loss in accordance with IEC 60947-7-x	0.77 W
Pollution severity	3		

**UL rating data**

Certificate No. (cURus)	E60693	Conductor size Factory wiring max. (cURus)	12 AWG
Conductor size Factory wiring min. (cURus)	26 AWG	Conductor size Field wiring max. (cURus)	12 AWG
Conductor size Field wiring min. (cURus)	26 AWG	Current size C (cURus)	20 A
Current size D (cURus)	5 A	Voltage size C (cURus)	300 V
Voltage size D (cURus)	600 V		

**Classifications**

ETIM 7.0	EC000897	ETIM 8.0	EC000897
ETIM 9.0	EC000897	ECLASS 11.0	27-14-11-20
ECLASS 12.0	27-14-11-20	ECLASS 13.0	27-25-01-17

**Approvals**

Approvals



ROHS	Conform
UL File Number Search	UL Website
Certificate No. (cURus)	E60693

**ZDT 2.5/2 DU-PE**

**Weidmüller Interface GmbH & Co. KG**  
Klingenbergstraße 26  
D-32758 Detmold  
Germany

[www.weidmueller.com](http://www.weidmueller.com)

**Technical data****Downloads**

Approval/Certificate/Document of Conformity	<a href="#">DNVGL certificate</a> <a href="#">CB Testreport</a> <a href="#">CB Certificate</a> <a href="#">Declaration of Conformity</a> <a href="#">UKCA declaration of conformity</a> <a href="#">Confirmation of Standards EN 45545-2_2020-10</a>
Engineering Data	<a href="#">CAD data – STEP</a>
Engineering Data	<a href="#">Zuken E3.S</a>
User Documentation	<a href="#">StorageConditionsTerminalBlocks</a>
Catalogues	<a href="#">Catalogues in PDF-format</a>
Brochures	

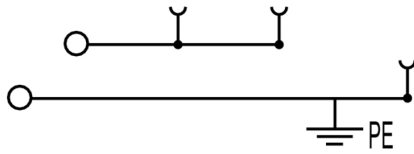
**Data sheet**

**ZDT 2.5/2 DU-PE**

**Weidmüller Interface GmbH & Co. KG**  
Klingenbergstraße 26  
D-32758 Detmold  
Germany

[www.weidmueller.com](http://www.weidmueller.com)

**Drawings**



## ZDT 2.5/2 DU-PE

**Weidmüller Interface GmbH & Co. KG**  
 Klingenbergstraße 26  
 D-32758 Detmold  
 Germany

www.weidmueller.com

# Accessories

## Blank



WS markers are the perfect match for the W-series connectors. Thanks to their system compatibility, the WS tags can also be used with the I-series and the Z-series. The large marking surfaces do not only permit long character strings but also multi-line text. WS markers are ideal for labels with long, customised character strings. Thanks to the proven MultiCard format, printing with PrintJet CONNECT oder/or Plotter is possible.

- Can be fitted in strips or individually
- Markers in proven MultiCard format

**For custom printing:** Please send us a file of our labeling software M-Print PRO or M-Print PRO Online (without installation) for your labeling specifications.

### General ordering data

Type	WS 10/5 M MC NE WS	Version
Order No.	<a href="#">1792000000</a>	WS, Terminal marker, 10 x 5 mm, Pitch in mm (P): 5.00 Weidmueller,
GTIN (EAN)	4032248223862	Allen-Bradley, white
Qty.	720 pc(s).	

## Marker holder



The marker holder offer the possibility of additional mounting of standard markers with a pitch of 5 or 5.1 mm. The angled holders can be optionally snapped together and could be mounted in all standard marking channels of the Klippon<sup>®</sup> Connect modular terminal blocks. Fitting marker types could be found under the respective accessories of the designation marking holder.

### General ordering data

Type	BZT 1 ZA WS 10/5	Version
Order No.	<a href="#">1805520000</a>	Accessories, Marker holder
GTIN (EAN)	4032248270248	
Qty.	100 pc(s).	
Type	BZT 1 WS 10/5	Version
Order No.	<a href="#">1805490000</a>	Accessories, Marker holder
GTIN (EAN)	4032248270231	
Qty.	100 pc(s).	

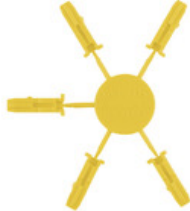
**ZDT 2.5/2 DU-PE**

**Weidmüller Interface GmbH & Co. KG**  
 Klingenbergstraße 26  
 D-32758 Detmold  
 Germany

www.weidmueller.com

**Accessories**

**Coding elements**



Through the use of coding pins, individual coding options ensure trouble-free plug-in connection.

**General ordering data**

Type	KOSF ZT2.5	Version
Order No.	<a href="#">1816150000</a>	Z-series, Coding element, yellow, 2.9 mm
GTIN (EAN)	4032248370726	
Qty.	50 pc(s).	

**Strain reliefs**



The strain relief protects the contact against mechanical stress and protects the connector against inadvertent release from the contact point.

**General ordering data**

Type	ZZE ZP2.5/4	Version
Order No.	<a href="#">1866220000</a>	Z-series, Strain relief, yellow, 19.9 mm
GTIN (EAN)	4032248480845	
Qty.	25 pc(s).	
Type	ZZE ZP2.5	Version
Order No.	<a href="#">1816140000</a>	Z-series, Strain relief, yellow, 9.9 mm
GTIN (EAN)	4032248370719	
Qty.	25 pc(s).	



**ZDT 2.5/2 DU-PE**

**Weidmüller Interface GmbH & Co. KG**  
 Klingenbergstraße 26  
 D-32758 Detmold  
 Germany

www.weidmueller.com

**Accessories****ZGB pivotable group tag holder**

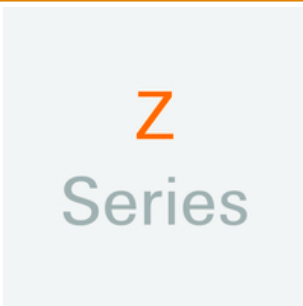
The ZGB 15 is a hinged group tag carrier. The tag carrier can hold the dekafix 5, WS 12/5 terminal markers or the inlay tag ESO 15.

The ZGB 30 is a hinged group tag carrier. The tag carrier can hold the dekafix 5, WS 12/5 terminal markers or the inlay tag ESO 7.

Inlay tags and protective strips can be found under "Accessories".

**General ordering data**

Type	ZGB 30	Version
Order No.	<a href="#">1611930000</a>	Terminal markers, Terminal marker, 32 x 7 mm, Pitch in mm (P): 5.00
GTIN (EAN)	4008190002251	Weidmueller, white
Qty.	20 pc(s).	
Type	ZGB 15	Version
Order No.	<a href="#">1636530000</a>	Terminal markers, Terminal marker, 15 x 7 mm, Pitch in mm (P): 5.00
GTIN (EAN)	4008190297053	Weidmueller, white
Qty.	20 pc(s).	
Type	ZGB 30/3.5	Version
Order No.	<a href="#">1778290000</a>	Terminal markers, Terminal marker, 32 x 7 mm, Pitch in mm (P): 3.50
GTIN (EAN)	4032248161065	white
Qty.	20 pc(s).	

**Z-Series**

Test adapters and test plugs are used for the electrical connection between terminal blocks and the test equipment. In this way, an electrical contact can be established in the wired state and measurements can be done easily.

**General ordering data**

Type	ZTA ZT2.5/ZA	Version
Order No.	<a href="#">1847600000</a>	Accessories, Test adapter, 17.5 A
GTIN (EAN)	4032248412679	
Qty.	25 pc(s).	
Type	ZTA ZT2.5	Version
Order No.	<a href="#">1827080000</a>	Accessories, Test adapter, 17.5 A
GTIN (EAN)	4032248411276	
Qty.	25 pc(s).	

**Data sheet**

**ZDT 2.5/2 DU-PE**

**Weidmüller Interface GmbH & Co. KG**  
 Klingenbergstraße 26  
 D-32758 Detmold  
 Germany

www.weidmueller.com

**Accessories**

**Protective covers**

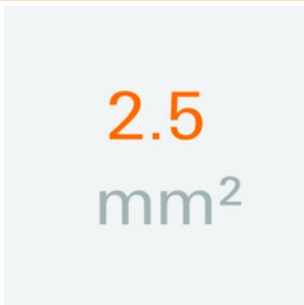


The cover of the plug contact offers protection from external influences, e.g. soiling from dust.

**General ordering data**

Type	ZAD ZT/ZPS2.5	Version
Order No.	<a href="#">1861030000</a>	Z-series, cover plate, yellow, 4.2 mm
GTIN (EAN)	4032248418428	
Qty.	25 pc(s).	

**2.5 mm<sup>2</sup>**



End plates are fitted to the open side of the last modular terminal before the end bracket. The use of an end plate ensures the function of the modular terminal and the specified rated voltage. It guarantees protection against contact with live parts and makes the final terminal finger-proof.

**General ordering data**

Type	ZAP/TW ZDT2.5/2	Version
Order No.	<a href="#">1816110000</a>	Z-series, End plate, Partition plate
GTIN (EAN)	4032248370689	
Qty.	50 pc(s).	

## ZDT 2.5/2 DU-PE

Weidmüller Interface GmbH &amp; Co. KG

Klingenbergstraße 26

D-32758 Detmold

Germany

www.weidmueller.com

## Accessories

## Blank



The Dekafix (DEK) marker is the universal marker for all conductor and plug-in connectors as well as for electronic sub-assemblies. The system is ideal for short number sequences and covers a wide range of ready-printed markers.

Strips for fast installation in only one work step. The printing is easy to read, rich in contrast and available in various widths.

- Large range of ready-to-use markers
- Strips for fast installation
- Terminal markers, suitable for all Weidmüller cable connectors
- Available as blank MultiCard or with standard printing

**For custom printing:** Please send us a file of our labeling software M-Print PRO or M-Print PRO Online (without installation) for your labeling specifications.

## General ordering data

Type	DEK 5/5 MC NE WS	Version
Order No.	<a href="#">1609801044</a>	Dekafix, Terminal marker, 5 x 5 mm, Pitch in mm (P): 5.00
GTIN (EAN)	4008190397111	Weidmueller, white
Qty.	1,000 pc(s).	

## Blank



ZS markers - in proven MultiCard-format - have been developed specifically for the Z-series. They have a large printing area. The hinged mechanism even allows access to cross-connectors without dismantling. Quick installation is guaranteed by the fact that the single tags are clipped on in strips. The single tags are easy to separate.

- Hinged marker area
- Can be fitted in strips or individually
- Markers in proven MultiCard format

**For custom printing:** Please send us a file of our labeling software M-Print PRO or M-Print PRO Online (without installation) for your labeling specifications.

## General ordering data

Type	ZS 10/5 MC NE WS	Version
Order No.	<a href="#">1610000000</a>	ZS, Terminal marker, 10 x 5 mm, Pitch in mm (P): 5.00 Weidmueller,
GTIN (EAN)	4008190263171	Allen-Bradley, white
Qty.	480 pc(s).	

**ZDT 2.5/2 DU-PE**

**Weidmüller Interface GmbH & Co. KG**  
 Klingenbergstraße 26  
 D-32758 Detmold  
 Germany

www.weidmueller.com

**Accessories**

**Locking elements**



The plugs can be securely and easily fixed to the base terminal by using a locking element. The locking element avoids an unintentional disconnection of the plugs from the base terminal and ensures maximum safety.

**General ordering data**

Type	ZVR ZPS2.5	Version
Order No.	<a href="#">1878620000</a>	Z-series, Locking clips, yellow, 15 mm
GTIN (EAN)	4032248471591	
Qty.	20 pc(s).	
Type	ZVR ZP2.5	Version
Order No.	<a href="#">1816130000</a>	Z-series, Locking clips, yellow, 3.9 mm
GTIN (EAN)	4032248370702	
Qty.	25 pc(s).	

**Coupling**



A coupling offers the possibility to use the WeiCoS connector system without a base terminal block. The system can be used as a floating or permanently installed application for connecting two conductors.

**General ordering data**

Type	ZVLA DF CL ZPS2.5	Version
Order No.	<a href="#">1878610000</a>	Z-series, Plug-in modular terminals, yellow
GTIN (EAN)	4032248471584	
Qty.	20 pc(s).	
Type	ZVLA SC ZPS2.5	Version
Order No.	<a href="#">1866240000</a>	Z-series, Plug-in modular terminals, yellow, 15 mm
GTIN (EAN)	4032248513376	
Qty.	20 pc(s).	
Type	ZVLA RC ZPS2.5	Version
Order No.	<a href="#">1866260000</a>	Z-series, Plug-in modular terminals, yellow, 8.8 mm
GTIN (EAN)	4032248524754	
Qty.	20 pc(s).	
Type	ZVLA1 ZPS2.5	Version
Order No.	<a href="#">1866250000</a>	Z-series, Plug-in modular terminals, yellow, 8.8 mm
GTIN (EAN)	4032248524761	
Qty.	20 pc(s).	

## ZDT 2.5/2 DU-PE

Weidmüller Interface GmbH &amp; Co. KG

Klingenbergstraße 26

D-32758 Detmold

Germany

www.weidmueller.com

## Accessories

2.5 mm<sup>2</sup>


2.5  
mm<sup>2</sup>

The plug-in cross-connections feature easy handling and quick installation. This saves a great deal of time during installation in comparison with screwed solutions.

## General ordering data

Type	ZQV 2.5N/7 GE	Version
Order No.	<a href="#">1693850000</a>	W-Series, Cross-connector, 24 A
GTIN (EAN)	4008190883683	
Qty.	20 pc(s).	
Type	ZQV 2.5N/8 GE	Version
Order No.	<a href="#">1693860000</a>	W-Series, Cross-connector, 24 A
GTIN (EAN)	4008190883690	
Qty.	20 pc(s).	
Type	ZQV 2.5N/9 GE	Version
Order No.	<a href="#">1693870000</a>	W-Series, Cross-connector, 24 A
GTIN (EAN)	4008190883706	
Qty.	20 pc(s).	
Type	ZQV 2.5N/4 GE	Version
Order No.	<a href="#">1693820000</a>	W-Series, Cross-connector, 24 A
GTIN (EAN)	4008190883652	
Qty.	60 pc(s).	
Type	ZQV 2.5N/6 GE	Version
Order No.	<a href="#">1693840000</a>	W-Series, Cross-connector, 24 A
GTIN (EAN)	4008190883676	
Qty.	20 pc(s).	
Type	ZQV 2.5N/10 GE	Version
Order No.	<a href="#">1693880000</a>	W-Series, Cross-connector, 24 A
GTIN (EAN)	4008190883720	
Qty.	20 pc(s).	
Type	ZQV 2.5N/20 GE	Version
Order No.	<a href="#">1909000000</a>	W-Series, Cross-connector, 24 A
GTIN (EAN)	4032248535613	
Qty.	20 pc(s).	
Type	ZQV 2.5N/3 GE	Version
Order No.	<a href="#">1693810000</a>	W-Series, Cross-connector, 24 A
GTIN (EAN)	4008190883645	
Qty.	60 pc(s).	
Type	ZQV 2.5N/50 GE	Version
Order No.	<a href="#">1693890000</a>	W-Series, Cross-connector, 24 A
GTIN (EAN)	4008190883737	
Qty.	5 pc(s).	
Type	ZQV 2.5N/2 GE	Version
Order No.	<a href="#">1693800000</a>	W-Series, Cross-connector, 24 A
GTIN (EAN)	4008190883621	
Qty.	60 pc(s).	

Creation date March 12, 2024 3:13:06 PM CET

Catalogue status 09.03.2024 / We reserve the right to make technical changes.

13

**Data sheet**

**ZDT 2.5/2 DU-PE**

**Weidmüller Interface GmbH & Co. KG**  
 Klingenbergstraße 26  
 D-32758 Detmold  
 Germany

www.weidmueller.com

**Accessories**

Type	ZQV 2.5N/5 GE	Version	
Order No.	<a href="#">1693830000</a>	W-Series, Cross-connector, 24 A	
GTIN (EAN)	4008190883669		
Qty.	20 pc(s).		

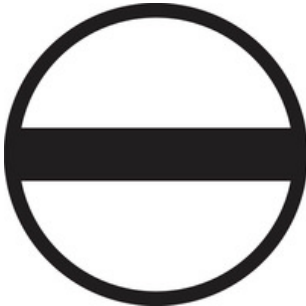
**STR transparent strips**



**General ordering data**

Type	STR 7 F.SCHT 7	Version	
Order No.	<a href="#">0515300000</a>	Terminal markers, Protective cap, 27 x 6.3 mm, Transparent	
GTIN (EAN)	4008190182175		
Qty.	20 pc(s).		

**Slotted screwdriver**



VDE insulated screwdriver sets, for working on live parts up to 1000 V AC and 1500 V DC, DIN EN 60900, IEC 900. Each piece is "GS" safety tested. Blade made from fully hardened, high-alloy chromium-vanadium-molybdenum steel, gun-metal finish.

**General ordering data**

Type	SDIS SLIM 0.6X3.5X100	Version	
Order No.	<a href="#">2749610000</a>	Mounting tool, Blade width (B): 3.5 mm, Blade length: 100 mm, Blade thickness (A): 0.6 mm	
GTIN (EAN)	4050118896350		
Qty.	1 pc(s).		

## ZDT 2.5/2 DU-PE

**Weidmüller Interface GmbH & Co. KG**  
 Klingenbergstraße 26  
 D-32758 Detmold  
 Germany

www.weidmueller.com

## Accessories

2.5 mm<sup>2</sup>

2.5  
mm<sup>2</sup>

The plugs for our WeiCoS-System are available for all different connection systems. The product range includes preassembled connectors from 1 to 10 poles and the possibility of an individual assembly. This ensures maximum flexibility for every application. The customized accessories increase the safety and protection against environmental influences.

## General ordering data

Type	ZP 2.5/1AN/QV/11	Version
Order No.	<a href="#">1815290000</a>	Z-series, Plug-in connector, dark beige, Direct mounting
GTIN (EAN)	4032248342570	
Qty.	20 pc(s).	
Type	ZP 2.5/1AN/QV/17	Version
Order No.	<a href="#">1815350000</a>	Z-series, Plug-in connector, dark beige, Direct mounting
GTIN (EAN)	4032248370153	
Qty.	10 pc(s).	
Type	ZP 2.5/1AN/QV/6	Version
Order No.	<a href="#">1815240000</a>	Z-series, Plug-in connector, dark beige, Direct mounting
GTIN (EAN)	4032248342525	
Qty.	25 pc(s).	
Type	ZP 2.5/1AN/QV/8	Version
Order No.	<a href="#">1815260000</a>	Z-series, Plug-in connector, dark beige, Direct mounting
GTIN (EAN)	4032248342549	
Qty.	20 pc(s).	
Type	ZP 2.5/1AN/QV/20	Version
Order No.	<a href="#">1815380000</a>	Rail components, Plug-in connector
GTIN (EAN)	4032248370184	
Qty.	10 pc(s).	
Type	ZP 2.5/1AN/QV/14	Version
Order No.	<a href="#">1815320000</a>	Z-series, Plug-in connector, dark beige, Direct mounting
GTIN (EAN)	4032248370122	
Qty.	10 pc(s).	
Type	ZP 2.5/1AN/QV/5	Version
Order No.	<a href="#">1815230000</a>	Z-series, Plug-in connector, dark beige, Direct mounting
GTIN (EAN)	4032248342518	
Qty.	25 pc(s).	
Type	ZP 2.5/1AN/QV/1	Version
Order No.	<a href="#">1815190000</a>	Z-series, Plug-in connector, dark beige, Direct mounting
GTIN (EAN)	4032248370061	
Qty.	50 pc(s).	
Type	ZP 2.5/1AN/QV/1 GN	Version
Order No.	<a href="#">1820570000</a>	Z-series, Plug-in connector, green, Direct mounting
GTIN (EAN)	4032248370078	
Qty.	50 pc(s).	
Type	ZP 2.5/1AN/QV/13	Version
Order No.	<a href="#">1815310000</a>	Z-series, Plug-in connector, dark beige, Direct mounting
GTIN (EAN)	4032248370115	
Qty.	10 pc(s).	

Creation date March 12, 2024 3:13:06 PM CET

## ZDT 2.5/2 DU-PE

Weidmüller Interface GmbH &amp; Co. KG

Klingenbergstraße 26

D-32758 Detmold

Germany

www.weidmueller.com

## Accessories

Type	ZP 2.5/1AN/QV/2	Version
Order No.	<a href="#">1815200000</a>	Z-series, Plug-in connector, dark beige, Direct mounting
GTIN (EAN)	4032248370085	
Qty.	25 pc(s).	
Type	ZP 2.5/1AN/QV/12	Version
Order No.	<a href="#">1815300000</a>	Z-series, Plug-in connector, dark beige, Direct mounting
GTIN (EAN)	4032248342587	
Qty.	20 pc(s).	
Type	ZP 2.5/1AN/QV/3	Version
Order No.	<a href="#">1815210000</a>	Z-series, Plug-in connector, dark beige, Direct mounting
GTIN (EAN)	4032248370092	
Qty.	25 pc(s).	
Type	ZP 2.5/1AN/QV/9	Version
Order No.	<a href="#">1815270000</a>	Z-series, Plug-in connector, dark beige, Direct mounting
GTIN (EAN)	4032248342556	
Qty.	20 pc(s).	
Type	ZP 2.5/1AN/QV/10	Version
Order No.	<a href="#">1815280000</a>	Z-series, Plug-in connector, dark beige, Direct mounting
GTIN (EAN)	4032248342563	
Qty.	20 pc(s).	
Type	ZP 2.5/1AN/QV/7	Version
Order No.	<a href="#">1815250000</a>	Z-series, Plug-in connector, dark beige, Direct mounting
GTIN (EAN)	4032248342532	
Qty.	25 pc(s).	
Type	ZP 2.5/1AN/QV/15	Version
Order No.	<a href="#">1815330000</a>	Z-series, Plug-in connector, dark beige, Direct mounting
GTIN (EAN)	4032248370139	
Qty.	10 pc(s).	
Type	ZP 2.5/1AN/QV/16	Version
Order No.	<a href="#">1815340000</a>	Z-series, Plug-in connector, dark beige, Direct mounting
GTIN (EAN)	4032248370146	
Qty.	10 pc(s).	
Type	ZP 2.5/1AN/QV/4	Version
Order No.	<a href="#">1815220000</a>	Z-series, Plug-in connector, dark beige, Direct mounting
GTIN (EAN)	4032248370108	
Qty.	25 pc(s).	