

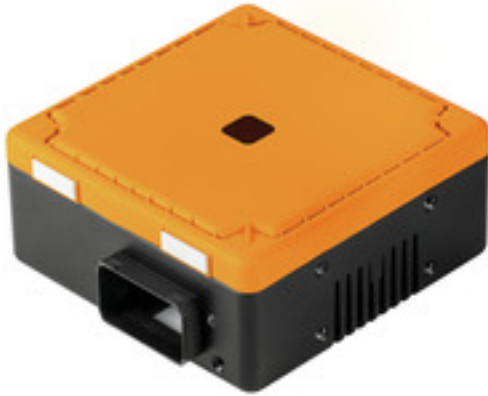
**IE-CL240W-PP-REMOTE****Weidmüller Interface GmbH & Co. KG**

Klingenbergstraße 26

D-32758 Detmold

Germany

www.weidmueller.com



Contactless and maintenance-free energy transmission up to 240 W – FreeCon Contactless offers top performance with the smallest dimensions and maximum efficiency.

**General ordering data**

Version	Contactless power transmission, Secondary side
Order No.	<a href="#">1547450000</a>
Type	IE-CL240W-PP-REMOTE
GTIN (EAN)	4050 1 1835305 1
Qty.	1 pc(s).

Creation date December 4, 2023 11:22:32 AM CET

Catalogue status 24.11.2023 / We reserve the right to make technical changes.

**IE-CL240W-PP-REMOTE****Weidmüller Interface GmbH & Co. KG**

Klingenbergstraße 26

D-32758 Detmold

Germany

www.weidmueller.com

**Technical data****Dimensions and weights**

Height	50 mm	Height (inches)	1.969 inch
Width	100 mm	Width (inches)	3.937 inch
Length	100 mm	Length (inches)	3.937 inch
Net weight	1,020 g		

**Temperatures**

Operating temperature	-20 °C...45 °C	Note: room temperature (service)	Consider derating
-----------------------	----------------	----------------------------------	-------------------

**General data**

Air gap	0...5 mm	Centre offset	max. 5mm
Coupling time	< 500 ms	Housing main material	Diecast zinc, painted, Cover PBT
Loads	Inductive and resistive loads	Power interface	PROFINET PushPull Power
Protection degree	IP65	Secondary current max.	10 A
Technologie, version	Inductive resonance coupling	Weight	1,020 g

**Electrical properties**

Degree of efficiency	max. 91 %	LED indicator	Status indication via multi-coloured LED
Secondary current max.	10 A	Secondary voltage	24 V DC (19.2...28.8 V DC)

**Classifications**

ETIM 6.0	EC002714	ETIM 7.0	EC002714
ETIM 8.0	EC002714	ETIM 9.0	EC002714
ECLASS 9.0	27-27-01-01	ECLASS 9.1	27-27-01-01
ECLASS 10.0	27-27-01-01	ECLASS 11.0	27-27-01-01
ECLASS 12.0	27-27-40-01	ECLASS 13.0	27274001

**Approvals**

Approvals



ROHS

Conform

## IE-CL240W-PP-REMOTE

**Weidmüller Interface GmbH & Co. KG**  
Klingenbergstraße 26  
D-32758 Detmold  
Germany

[www.weidmueller.com](http://www.weidmueller.com)

## Technical data

### Downloads

Approval/Certificate/Document of Conformity	<a href="#">EMV / EMC Test</a> <a href="#">CE_FreeCon_Contactless.pdf</a>
Engineering Data	<a href="#">CAD data – STEP</a>
User Documentation	<a href="#">Manual EN</a> <a href="#">MAN IE GUIDE DE</a> <a href="#">MAN IE GUIDE EN</a> <a href="#">Short Manual</a> <a href="#">Manual DE</a>
White paper	<a href="#">Whitepaper FreeCon Contactless</a> <a href="#">Whitepaper FreeCon Contactless</a>
Catalogues	<a href="#">Catalogues in PDF-format</a>
Brochures	<a href="#">MB FREECONCONTACT EN</a> <a href="#">FL FIELDWIRING EN</a> <a href="#">PI PROFINET CABLING EN</a> <a href="#">PI PROFINET CABLING EN</a>

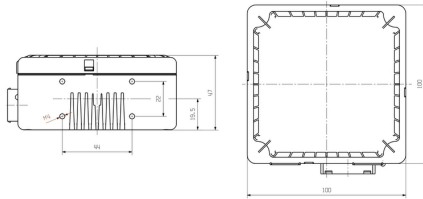
**IE-CL240W-PP-REMOTE**

**Weidmüller Interface GmbH & Co. KG**  
 Klingenbergstraße 26  
 D-32758 Detmold  
 Germany

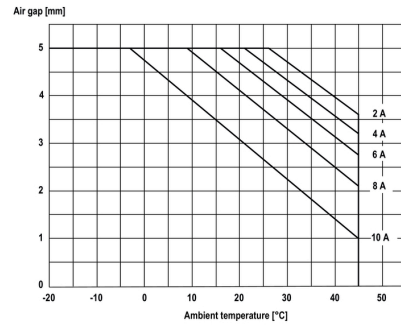
[www.weidmueller.com](http://www.weidmueller.com)

**Drawings**

**Dimensioned drawing**



**Derating curve**



## IE-CL240W-PP-REMOTE

Weidmüller Interface GmbH &amp; Co. KG

Klingenbergstraße 26

D-32758 Detmold

Germany

www.weidmueller.com

## Accessories

## Blank



ESG is the tried-and-tested marker in MultiCard format for use on many well-known electrical devices. The result is high-quality device marking with a high-contrast appearance.

Various types are available for devices from manufacturers like Siemens, ABB, Beckhoff etc.

Advantages at a glance:

- Tags for universal usage, self-adhesive or clip-on tags, depending on type
- For aligned equipment, e.g. circuit breakers, we supply ESG markers for clipping onto tag rails
- Individual laser-quality printing according to specifications

**For custom printing:** Please send us a file of our labeling software M-Print PRO or M-Print PRO Online (without installation) for your labeling specifications.

## General ordering data

Type	ESG 6/17 K MC NE WS	Version
Order No.	<a href="#">1880120000</a>	ESG, Device markers x 17 mm, PA 66, Colour: white, Self-adhesive
GTIN (EAN)	4032248478804	
Qty.	200 pc(s).	

## UPS control unit



The UPS control unit together with the associated battery module and the power supply unit form a complete DC UPS system. In normal operation, the input voltage from the UPS control unit is connected directly to the load. In the event of a mains failure (drop of the DC input voltage) the system switches instantly to battery operation.

Once the mains supply has been restored, the system switches back to normal operation and the battery is fully recharged by the integrated charger.

Three relay outputs, as well as three additional active transistor outputs and a control input to lock battery operation, provide full remote control by means of SPS or DCS control. Numerous modes of operation and an easy-to-use status display provide rapid fault diagnosis and optimum customisation to the application.

## General ordering data

Type	CP DC UPS 24V 20A/10A	Version
Order No.	<a href="#">1370050010</a>	UPS control unit
GTIN (EAN)	4050118202335	
Qty.	1 pc(s).	

## IE-CL240W-PP-REMOTE

**Weidmüller Interface GmbH & Co. KG**  
 Klingenbergstraße 26  
 D-32758 Detmold  
 Germany

[www.weidmueller.com](http://www.weidmueller.com)

## Accessories

### Battery module



The 5 battery modules with capacities from 1,2 Ah to 17Ah can supply up to 40 A for 30 minutes or 1 A for 30 hours and are fully compatible with the DC UPS control units CP DC UPS 24V 20A/10A & CP DC UPS 24V 40A. And for sure, the DURAcoco series is a flexible & ease of use solution in a cost-effective design.

### General ordering data

Type	CP A BATTERY 24V DC 17AH	Version
Order No.	<a href="#">1251110000</a>	Battery
GTIN (EAN)	4050118043136	
Qty.	1 pc(s).	

### Sets



PushPull Power plug-in connector according to PROFINET specification

### General ordering data

Type	IE-PS-VAPM-24V	Version
Order No.	<a href="#">1068910000</a>	Power connector, Plug, PROFINET, Set of connectors
GTIN (EAN)	4032248823079	
Qty.	10 pc(s).	