

## BLA 8B SN OR

Weidmüller Interface GmbH &amp; Co. KG

Klingenbergstraße 26

D-32758 Detmold

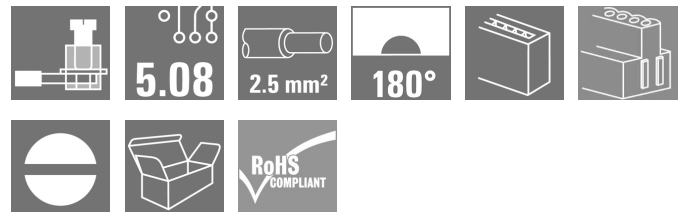
Germany

www.weidmueller.com

## Product image



Do not use product for new developments



Female header with clamping yoke connection system. The principle of the vibration-proof screw connection and the Unimate range pin arrangement provides a unique security during operation. Also available with dovetail (B) for convenient attachment of fixing blocks. The BLA has a labelling panel and can be coded. Supplied in cardboard box.

## General ordering data

|                     |                                                                                                                                                  |
|---------------------|--------------------------------------------------------------------------------------------------------------------------------------------------|
| Version             | PCB plug-in connector, female plug, 5.08 mm, Number of poles: 8, 180°, Clamping yoke connection, Clamping range, max.: 1.5 mm <sup>2</sup> , Box |
| Order No.           | <a href="#">1356660000</a>                                                                                                                       |
| Type                | BLA 8B SN OR                                                                                                                                     |
| GTIN (EAN)          | 4008190096793                                                                                                                                    |
| Qty.                | 42 pc(s).                                                                                                                                        |
| Product data        | IEC: 400 V / 17.5 A / 0.2 - 1.5 mm <sup>2</sup><br>UL: 300 V / 10 A / AWG 28 - AWG 16                                                            |
| Packaging           | Box                                                                                                                                              |
| Delivery status     | <b>This article will no longer be available in the future.</b>                                                                                   |
| Creation date       | March 12, 2024 5:15:11 PM CET                                                                                                                    |
| Alternative product | <a href="#">1943640000</a>                                                                                                                       |

## BLA 8B SN OR

Weidmüller Interface GmbH &amp; Co. KG

Klingenbergstraße 26

D-32758 Detmold

Germany

www.weidmueller.com

## Technical data

## Dimensions and weights

|            |          |                 |            |
|------------|----------|-----------------|------------|
| Depth      | 20 mm    | Depth (inches)  | 0.787 inch |
| Height     | 15.2 mm  | Height (inches) | 0.598 inch |
| Width      | 40.46 mm | Width (inches)  | 1.593 inch |
| Net weight | 14.84 g  |                 |            |

## System Parameters

|                                              |                                                     |                                            |                     |
|----------------------------------------------|-----------------------------------------------------|--------------------------------------------|---------------------|
| Product family                               | OMNIMATE Signal - series<br>BLA/SLA 5.08            | Type of connection                         | Field connection    |
| Wire connection method                       | Clamping yoke connection                            | Pitch in mm (P)                            | 5.08 mm             |
| Pitch in inches (P)                          | 0.2 "                                               | Conductor outlet direction                 | 180°                |
| Number of poles                              | 8                                                   | L1 in mm                                   | 35.56 mm            |
| L1 in inches                                 | 1.4 "                                               | Number of rows                             | 1                   |
| Pin series quantity                          | 1                                                   | Rated cross-section                        | 2.5 mm <sup>2</sup> |
| Touch-safe protection acc. to DIN VDE 57 106 | finger-safe unplugged/<br>back-of-hand-safe plugged | Touch-safe protection acc. to DIN VDE 0470 | IP 20               |
| Protection degree                            | IP20                                                | Volume resistance                          | 5.50 mΩ             |
| Can be coded                                 | Yes                                                 | Stripping length                           | 7 mm                |
| Tightening torque, min.                      | 0.4 Nm                                              | Tightening torque, max.                    | 0.5 Nm              |
| Clamping screw                               | M 2.5                                               | Screwdriver blade                          | 0.6 x 3.5           |
| Screwdriver blade standard                   | DIN 5264                                            | Plugging cycles                            | 25                  |
| Pulling force/pole, max.                     | 2 N                                                 |                                            |                     |

## Material data

|                                       |                            |                                       |        |
|---------------------------------------|----------------------------|---------------------------------------|--------|
| Insulating material                   | PBT GF                     | Colour                                | orange |
| Colour chart (similar)                | RAL 2000                   | Insulating material group             | IIIa   |
| Comparative Tracking Index (CTI)      | ≥ 200                      | UL 94 flammability rating             | V-0    |
| Contact material                      | Cu-alloy                   | Contact surface                       | tinned |
| Layer structure of plug contact       | 4...8 μm Sn hot-dip tinned | Storage temperature, min.             | -40 °C |
| Storage temperature, max.             | 70 °C                      | Operating temperature, min.           | -50 °C |
| Operating temperature, max.           | 120 °C                     | Temperature range, installation, min. | -25 °C |
| Temperature range, installation, max. | 120 °C                     |                                       |        |

## Conductors suitable for connection

|                                                 |                      |                                                 |                                                                                                                                                                        |
|-------------------------------------------------|----------------------|-------------------------------------------------|------------------------------------------------------------------------------------------------------------------------------------------------------------------------|
| Clamping range, min.                            | 0.13 mm <sup>2</sup> | Clamping range, max.                            | 1.5 mm <sup>2</sup>                                                                                                                                                    |
| Wire connection cross section AWG, min.         | AWG 28               | Wire connection cross section AWG, max.         | AWG 16                                                                                                                                                                 |
| Solid, min. H05(07) V-U                         | 0.2 mm <sup>2</sup>  | Solid, max. H05(07) V-U                         | 1.5 mm <sup>2</sup>                                                                                                                                                    |
| Flexible, min. H05(07) V-K                      | 0.2 mm <sup>2</sup>  | Flexible, max. H05(07) V-K                      | 1.5 mm <sup>2</sup>                                                                                                                                                    |
| w. plastic collar ferrule, DIN 46228 pt 4, min. | 0.2 mm <sup>2</sup>  | w. plastic collar ferrule, DIN 46228 pt 4, max. | 1.5 mm <sup>2</sup>                                                                                                                                                    |
| w. wire end ferrule, DIN 46228 pt 1, min.       | 0.2 mm <sup>2</sup>  | w. wire end ferrule, DIN 46228 pt 1, max.       | 1.5 mm <sup>2</sup>                                                                                                                                                    |
| Plug gauge in accordance with EN 60999 a x b; ø |                      | Reference text                                  | The outside diameter of the plastic collar should not be larger than the pitch (P), Length of ferrules is to be chosen depending on the product and the rated voltage. |
|                                                 | 2.4 mm x 1.5 mm      |                                                 |                                                                                                                                                                        |

## BLA 8B SN OR

**Weidmüller Interface GmbH & Co. KG**  
 Klingenbergstraße 26  
 D-32758 Detmold  
 Germany


www.weidmueller.com

## Technical data


### Rated data acc. to IEC

|                                                                           |                        |                                                                       |                   |
|---------------------------------------------------------------------------|------------------------|-----------------------------------------------------------------------|-------------------|
| tested acc. to standard                                                   | IEC 60664-1, IEC 61984 | Rated current, min. number of poles (Tu=20°C)                         | 17.5 A            |
| Rated current, max. number of poles (Tu=20°C)                             | 12.5 A                 | Rated current, min. number of poles (Tu=40°C)                         | 16 A              |
| Rated current, max. number of poles (Tu=40°C)                             | 11 A                   | Rated voltage for surge voltage class / pollution degree II/2         | 400 V             |
| Rated voltage for surge voltage class / pollution degree III/2            | 320 V                  | Rated voltage for surge voltage class / pollution degree III/3        | 250 V             |
| Rated impulse voltage for surge voltage class/ pollution degree II/2      | 4 kV                   | Rated impulse voltage for surge voltage class/ pollution degree III/2 | 4 kV              |
| Rated impulse voltage for surge voltage class/ contamination degree III/3 | 4 kV                   | Short-time withstand current resistance                               | 3 x 1s with 100 A |

### Rated data acc. to CSA

|                                   |                                                                                   |                                   |           |
|-----------------------------------|-----------------------------------------------------------------------------------|-----------------------------------|-----------|
| Institute (CSA)                   |  | Certificate No. (CSA)             | 12400-158 |
| Rated voltage (Use group B / CSA) | 300 V                                                                             | Rated voltage (Use group D / CSA) | 300 V     |
| Rated current (Use group B / CSA) | 10 A                                                                              | Rated current (Use group D / CSA) | 10 A      |
| Wire cross-section, AWG, min.     | AWG 28                                                                            | Wire cross-section, AWG, max.     | AWG 16    |
| Reference to approval values      | Specifications are maximum values, details - see approval certificate.            |                                   |           |

### Rated data acc. to UL 1059

|                                       |                                                                                     |                                       |        |
|---------------------------------------|-------------------------------------------------------------------------------------|---------------------------------------|--------|
| Institute (UR)                        |  | Certificate No. (UR)                  | E60693 |
| Rated voltage (Use group B / UL 1059) | 300 V                                                                               | Rated voltage (Use group D / UL 1059) | 300 V  |
| Rated current (Use group B / UL 1059) | 10 A                                                                                | Rated current (Use group D / UL 1059) | 10 A   |
| Wire cross-section, AWG, min.         | AWG 28                                                                              | Wire cross-section, AWG, max.         | AWG 16 |
| Reference to approval values          | Specifications are maximum values, details - see approval certificate.              |                                       |        |

### Packing

|           |        |            |        |
|-----------|--------|------------|--------|
| Packaging | Box    | VPE length | 349 mm |
| VPE width | 140 mm | VPE height | 31 mm  |

### Classifications

|             |             |             |             |
|-------------|-------------|-------------|-------------|
| ETIM 6.0    | EC002638    | ETIM 7.0    | EC002638    |
| ETIM 8.0    | EC002638    | ETIM 9.0    | EC002638    |
| ECLASS 9.0  | 27-44-03-09 | ECLASS 9.1  | 27-44-03-09 |
| ECLASS 10.0 | 27-44-03-09 | ECLASS 11.0 | 27-46-02-02 |
| ECLASS 12.0 | 27-46-02-02 | ECLASS 13.0 | 27-46-02-02 |

## BLA 8B SN OR

**Weidmüller Interface GmbH & Co. KG**

Klingenbergstraße 26

D-32758 Detmold

Germany

www.weidmueller.com

## Technical data

### Important note

|                |                                                                                                                                                                                                                                                                                                                                                                                                                                                                                                                                                                                                                                                                                                                                                                                                                                                                                       |
|----------------|---------------------------------------------------------------------------------------------------------------------------------------------------------------------------------------------------------------------------------------------------------------------------------------------------------------------------------------------------------------------------------------------------------------------------------------------------------------------------------------------------------------------------------------------------------------------------------------------------------------------------------------------------------------------------------------------------------------------------------------------------------------------------------------------------------------------------------------------------------------------------------------|
| IPC conformity | Conformity: The products are developed, manufactured and delivered according international recognized standards and norms and comply with the assured properties in the data sheet resp. fulfill decorative properties in accordance with IPC-A-610 "Class 2". Further claims on the products can be evaluated on request.                                                                                                                                                                                                                                                                                                                                                                                                                                                                                                                                                            |
| Notes          | <ul style="list-style-type: none"> <li>• Additional variants on request</li> <li>• Gold-plated contact surfaces on request</li> <li>• Rated current related to rated cross-section &amp; min. No. of poles.</li> <li>• Wire end ferrule without plastic collar to DIN 46228/1</li> <li>• Wire end ferrule with plastic collar to DIN 46228/4</li> <li>• Rated data refer only to the component itself. Clearance and creepage distances to other components are to be designed in accordance with the relevant application standards.</li> <li>• In accordance with IEC 61984, OMNIMATE-connectors are connectors without breaking capacity (COC). During designated use, connectors are not allowed to be engaged or disengaged when live or under load</li> <li>• Long term storage of the product with average temperature of 50 °C and maximum humidity 70%, 36 months</li> </ul> |

### Approvals

Approvals



|                       |            |
|-----------------------|------------|
| ROHS                  | Conform    |
| UL File Number Search | UL Website |
| Certificate No. (UR)  | E60693     |

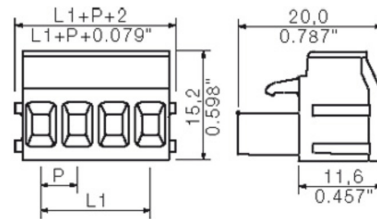
### Downloads

|                                             |                                                                                                                                                                                                                                                                                                                                                                                                                                                                                                                                                 |
|---------------------------------------------|-------------------------------------------------------------------------------------------------------------------------------------------------------------------------------------------------------------------------------------------------------------------------------------------------------------------------------------------------------------------------------------------------------------------------------------------------------------------------------------------------------------------------------------------------|
| Approval/Certificate/Document of Conformity | <a href="#">Declaration of the Manufacturer</a>                                                                                                                                                                                                                                                                                                                                                                                                                                                                                                 |
| Engineering Data                            | <a href="#">CAD data – STEP</a>                                                                                                                                                                                                                                                                                                                                                                                                                                                                                                                 |
| Catalogues                                  | <a href="#">Catalogues in PDF-format</a>                                                                                                                                                                                                                                                                                                                                                                                                                                                                                                        |
| Brochures                                   | <a href="#">FL DRIVES EN</a><br><a href="#">MB DEVICE MANUF. EN</a><br><a href="#">FL DRIVES DE</a><br><a href="#">FL BUILDING SAFETY EN</a><br><a href="#">FL APPL LED LIGHTING EN</a><br><a href="#">FLIndustr.CONTROLS EN</a><br><a href="#">FL MACHINE SAFETY EN</a><br><a href="#">FL HEATING ELECTR EN</a><br><a href="#">FL APPL INVERTER EN</a><br><a href="#">FL_BASE_STATION_EN</a><br><a href="#">FL ELEVATOR EN</a><br><a href="#">FL POWER SUPPLY EN</a><br><a href="#">FL 72H SAMPLE SER EN</a><br><a href="#">PO OMNIMATE EN</a> |

Creation date March 12, 2024 5:15:11 PM CET

Catalogue status 09.03.2024 / We reserve the right to make technical changes.

**Dimensional drawing**



## BLA 8B SN OR

**Weidmüller Interface GmbH & Co. KG**  
Klingenbergstraße 26  
D-32758 Detmold  
Germany

www.weidmueller.com

## Accessories

### Blocks for PCB mounting



#### Minor component, major effect:

Clip-on attachment elements increase the mechanical resilience of the whole plug connection by

- securing the male connectors to the circuit board
- providing a vibration-proof connection between the sockets and the male connectors

Clip-on or pre-assembled - always the right solution:

- Hard-wearing, precise fitting dovetail joint
- Hard-wearing metal threaded inserts
- Suitable for all outlet directions

Maximum stability, minimum effort:

- Extremely resilient for frequent fastening operations
- Complete set for easy selection

The result: soldering points, contacts and overall module are more resilient against mechanical stress such as vibrations and tensile loads.

### General ordering data

| Type       | SLA BB2R OR                | Version | Product data                                                         | Packaging |
|------------|----------------------------|---------|----------------------------------------------------------------------|-----------|
| Order No.  | <a href="#">1723440000</a> |         | PCB plug-in connector, Accessories, Mounting block, orange, Number   | Box       |
| GTIN (EAN) | 4008190365998              |         | of poles: 1                                                          |           |
| Qty.       | 20 pc(s).                  |         |                                                                      |           |
| Type       | SLA BB5R OR                | Version | Product data                                                         | Packaging |
| Order No.  | <a href="#">1723460000</a> |         | PCB plug-in connector, Accessories, Mounting block, orange, Number   | Box       |
| GTIN (EAN) | 4008190366018              |         | of poles: 1                                                          |           |
| Qty.       | 20 pc(s).                  |         |                                                                      |           |
| Type       | SLA BB5R SW                | Version | Product data                                                         | Packaging |
| Order No.  | <a href="#">1723510000</a> |         | PCB plug-in connector, Accessories, Mounting block, black, Number of | Box       |
| GTIN (EAN) | 4008190366063              |         | poles: 1                                                             |           |
| Qty.       | 20 pc(s).                  |         |                                                                      |           |
| Type       | SLA BB1R OR                | Version | Product data                                                         | Packaging |
| Order No.  | <a href="#">1723430000</a> |         | PCB plug-in connector, Accessories, Mounting block, orange, Number   | Box       |
| GTIN (EAN) | 4008190365981              |         | of poles: 1                                                          |           |
| Qty.       | 20 pc(s).                  |         |                                                                      |           |
| Type       | SLA BB1R SW                | Version | Product data                                                         | Packaging |
| Order No.  | <a href="#">1723480000</a> |         | PCB plug-in connector, Accessories, Mounting block, black, Number of | Box       |
| GTIN (EAN) | 4008190366032              |         | poles: 1                                                             |           |
| Qty.       | 20 pc(s).                  |         |                                                                      |           |
| Type       | SLA BB2R SW                | Version | Product data                                                         | Packaging |
| Order No.  | <a href="#">1723490000</a> |         | PCB plug-in connector, Accessories, Mounting block, black, Number of | Box       |
| GTIN (EAN) | 4008190366049              |         | poles: 1                                                             |           |
| Qty.       | 20 pc(s).                  |         |                                                                      |           |
| Type       | SLA BB12R OR               | Version | Product data                                                         | Packaging |
| Order No.  | <a href="#">1593450000</a> |         | PCB plug-in connector, Accessories, Mounting block, orange, Number   | Box       |
| GTIN (EAN) | 4008190122164              |         | of poles: 1                                                          |           |
| Qty.       | 100 pc(s).                 |         |                                                                      |           |

Creation date March 12, 2024 5:15:11 PM CET

Catalogue status 09.03.2024 / We reserve the right to make technical changes.

## Data sheet

### BLA 8B SN OR

**Weidmüller Interface GmbH & Co. KG**  
 Klingenbergstraße 26  
 D-32758 Detmold  
 Germany

www.weidmueller.com

## Accessories

| Type       | SLA BB6R SW                | Version                                                              | Product data | Packaging |
|------------|----------------------------|----------------------------------------------------------------------|--------------|-----------|
| Order No.  | <a href="#">1723520000</a> | PCB plug-in connector, Accessories, Mounting block, black, Number of |              | Box       |
| GTIN (EAN) | 4008190366070              | poles: 1                                                             |              |           |
| Qty.       | 20 pc(s).                  |                                                                      |              |           |
| Type       | SLA BB11R SW               | Version                                                              | Product data | Packaging |
| Order No.  | <a href="#">1692340000</a> | PCB plug-in connector, Accessories, Mounting block, black, Number of |              | Box       |
| GTIN (EAN) | 4008190864965              | poles: 1                                                             |              |           |
| Qty.       | 20 pc(s).                  |                                                                      |              |           |
| Type       | SLA BB12R SW               | Version                                                              | Product data | Packaging |
| Order No.  | <a href="#">1626880000</a> | PCB plug-in connector, Accessories, Mounting block, black, Number of |              | Box       |
| GTIN (EAN) | 4008190198213              | poles: 1                                                             |              |           |
| Qty.       | 100 pc(s).                 |                                                                      |              |           |
| Type       | SLA BB6R OR                | Version                                                              | Product data | Packaging |
| Order No.  | <a href="#">1723470000</a> | PCB plug-in connector, Accessories, Mounting block, orange, Number   |              | Box       |
| GTIN (EAN) | 4008190366025              | of poles: 1                                                          |              |           |
| Qty.       | 20 pc(s).                  |                                                                      |              |           |
| Type       | SLA BB11R OR               | Version                                                              | Product data | Packaging |
| Order No.  | <a href="#">1604120000</a> | PCB plug-in connector, Accessories, Mounting block, orange, Number   |              | Box       |
| GTIN (EAN) | 4008190182977              | of poles: 1                                                          |              |           |
| Qty.       | 20 pc(s).                  |                                                                      |              |           |

## Coding elements



### Only connects what is supposed to be connected: the right connection at the right place.

Coding elements and locking devices clearly assign connecting elements during the manufacturing process and operation

The coding elements and locking devices are inserted prior to assembly or during the cable assembly phase. The Weidmüller alternative: configure online using the variant configurator to precode prior to delivery.

Incorrect assembly on the circuit board and incorrect plugging of connecting elements is no longer possible.

The advantage: no troubleshooting during manufacture and no operational errors by the user.

## General ordering data

| Type       | SLA KO                     | Version                                                           | Product data | Packaging |
|------------|----------------------------|-------------------------------------------------------------------|--------------|-----------|
| Order No.  | <a href="#">1323560000</a> | PCB plug-in connector, Accessories, Coding element, white, Number |              | Box       |
| GTIN (EAN) | 4008190428389              | of poles: 1                                                       |              |           |
| Qty.       | 100 pc(s).                 |                                                                   |              |           |

**BLA 8B SN OR**

**Weidmüller Interface GmbH & Co. KG**  
 Klingenbergstraße 26  
 D-32758 Detmold  
 Germany

www.weidmueller.com

**Accessories**

**Cover hoods**



**Effective protection, optimised ergonomics and closed design:**

From the strain relief on the connected conductors and the visual/contact protection and the disconnection aid: the optional retrofit hoods perform mechanical, visual and haptic functions.

The two half shells clip together securely, enclose the plug completely and offer the following functions:

- Cable ties or integrated cable clips provide strain relief.
- Marked with dekafix labels or adhesive strips
- Mounting side by side without losing poles or displacing the pitch
- Compatible: suitable for plugs with or without a flange or mounting bracket
- Flexible: 1-3 cable outlets leading in different directions available depending on the size

Weidmüller hoods offer added stability, better identification, complete compatibility and versatility. The result: maximum reliability and user-friendliness in any application.

**General ordering data**

| Type       | BLA AHZH                   | Version                                                                 | Product data | Packaging |
|------------|----------------------------|-------------------------------------------------------------------------|--------------|-----------|
| Order No.  | <a href="#">1340410000</a> | PCB plug-in connector, Accessories, Help for pulling cover hood, black, |              | Box       |
| GTIN (EAN) | 4008190163365              | Number of poles: 1                                                      |              |           |
| Qty.       | 10 pc(s).                  |                                                                         |              |           |
| Type       | BLA AH 8 GR.1 OR           | Version                                                                 | Product data | Packaging |
| Order No.  | <a href="#">1327160000</a> | PCB plug-in connector, Accessories, Hood, orange, Number of poles: 8    |              | Box       |
| GTIN (EAN) | 4008190043926              |                                                                         |              |           |
| Qty.       | 20 pc(s).                  |                                                                         |              |           |