

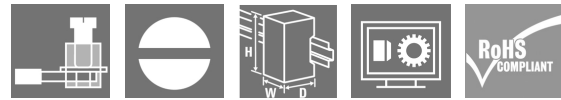
RS 32 24-48VUC LD LP 2U**Weidmüller Interface GmbH & Co. KG**

Klingenbergstraße 26

D-32758 Detmold

Germany

www.weidmueller.com

Product image**General ordering data**

Version	RS-SERIES, Relay module, Number of contacts: 2, CO contact AgNi 90/10, Rated control voltage: 24 V UC $\pm 10\%$, 48 V UC $\pm 10\%$, Continuous current: 4 A, Screw connection, Test button available: No
Order No.	1122661001
Type	RS 32 24-48VUC LD LP 2U
GTIN (EAN)	4032248046225
Qty.	10 pc(s).
Delivery status	This article will no longer be available in the future.
Available until	2022-11-25
Alternative product	2662880000

Creation date March 12, 2024 4:23:39 PM CET

RS 32 24-48VUC LD LP 2U

Weidmüller Interface GmbH & Co. KG

Klingenbergstraße 26

D-32758 Detmold

Germany

www.weidmueller.com

Technical data

Dimensions and weights

Depth	63.5 mm	Depth (inches)	2.5 inch
Height	70 mm	Height (inches)	2.756 inch
Width	25 mm	Width (inches)	0.984 inch
Net weight	45.68 g		

Temperatures

Storage temperature	-40 °C...60 °C	Operating temperature	-25 °C...40 °C
Humidity	40 °C / 93 % rel. humidity, no condensation		

Control side

Rated control voltage	24 V UC ±10 %, 48 V UC ±10 %	Rated current AC	28 mA / 22 mA
Rated current DC	18 mA / 20 mA	Power rating	0.6 W / 0.9 VA
Status indicator	Green LED	Protective circuit	Rectifier

Load side

Rated switching voltage	250 V AC	Continuous current	4 A
Max. switching frequency at rated load	0.1 Hz	Max. switching voltage, AC	250 V
Inrush current	6 A	AC switching capacity (resistive), max.	1000 VA
Switch-on delay	< 13 ms	Switch-off delay	≤ 10 ms
Contact type	2 CO contact (AgNi 90/10)	Mechanical service life	30 x 10 ⁶ switching cycles
Min. switching power	1 mA @ 24 V, 10 mA @ 10 V, 100 mA / 5 V DC		

General data

Version	soldered relay	Rail	TS 32, TS 35
Test button available	No	Mechanical switch position indicator	No
Colour	orange		

Insulation coordination

Rated voltage	300 V	Pollution severity	2
Surge voltage category	III	Creepage and clearance distance input - output	> 3 mm
Dielectric strength to mounting rail	4 kV _{eff} / 1 Min.	Impulse withstand voltage	4 kV (1.2/50 μs)
Protection degree	IP20		

Connection data

Wire connection method	Screw connection	Stripping length, rated connection	8 mm
Clamping range, rated connection	2.5 mm ²	Clamping range, min.	0.5 mm ²
Clamping range, max.	4 mm ²		

RS 32 24-48VUC LD LP 2U

Weidmüller Interface GmbH & Co. KG
 Klingenbergstraße 26
 D-32758 Detmold
 Germany

www.weidmueller.com

Technical data

Classifications

ETIM 6.0	EC001437	ETIM 7.0	EC001437
ETIM 8.0	EC001437	ETIM 9.0	EC001437
ECLASS 9.0	27-37-16-01	ECLASS 9.1	27-37-16-01
ECLASS 10.0	27-37-16-01	ECLASS 11.0	27-37-16-01
ECLASS 12.0	27-37-16-01	ECLASS 13.0	27-37-16-01

Environmental Product Compliance

REACH SVHC	Lead 7439-92-1
SCIP	3820ceea-2b49-4a61-bda5-08f3867b3419

Approvals

Approvals



ROHS Conform

Downloads

Approval/Certificate/Document of Conformity	DE_PA_5600_160311_001.pdf
Catalogues	Catalogues in PDF-format

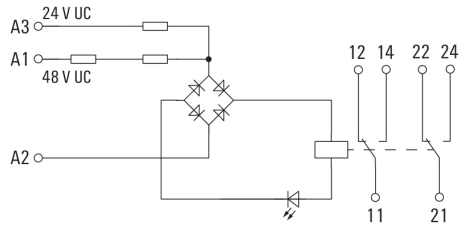
RS 32 24-48VUC LD LP 2U

Weidmüller Interface GmbH & Co. KG
Klingenbergstraße 26
D-32758 Detmold
Germany

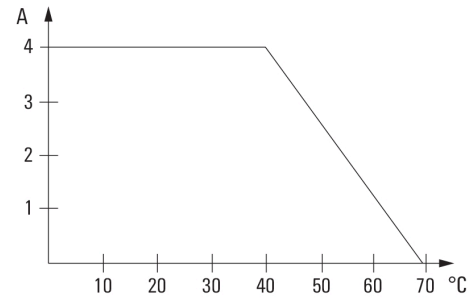
www.weidmueller.com

Drawings

Wiring diagram



Graph



DC load limit curve