

# Panel Actuators and Indicators

## Type PL 22

### Pilot Lights



PL 22C HL



PL 22C RL



PL 22C LL



PL 22S FL

- Ø 22mm (Ø0.87") dimension
- Compact versions
- Different colours choice
- High brightness pure colour LED
- High reliability and durability
- AC and DC voltage
- cULus and CE
- IEC/EN 60947-5-1, IEC/EN 60073, IEC/EN 60529

### Product description

Pilot lights are panel mounted lamp assemblies consisting of the indicator housing, an internal lamp, terminals, and a lens. Applications include industrial control panels of all

types, equipment indicator panels, status indicators and display lighting. The light source is high brightness pure colour LED.

### Approvals

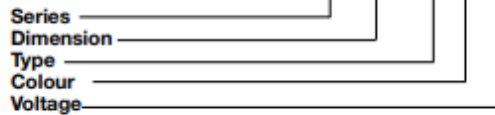


### Technical data

|  |                                  |
|--|----------------------------------|
| Rated imp. withstand voltage $U_{imp}$ | 2500VAC 50Hz 1min.               |
| Rated insulation Voltage $U_i$         | 500VAC                           |
| Allowable voltage fluctuation          | ±20%                             |
| Continuous operating life              | ≥100.000h                        |
| Ultrahigh brightness                   | ≥100cd/m <sup>2</sup> (≥9.29ftc) |
| Applying frequency                     | 50-60Hz                          |
| Current consumption (AC/DC)            | ≤18mA                            |
| Operating temperature                  | -25 to +70°C (-13 to +158°F)     |
| Storage temperature                    | -30 to +80°C (-22 to +176°F)     |
| Degree of protection                   | IP 65                            |

### Ordering key

PL 22C HL R 24 \*



\* Not all configurations available - see page 6 for complete list

### Dimensions

22S = Ø22mm (Ø0.87") standard size  
 22C = Ø22mm (Ø0.87") compact size (not for FL type)

### Types

HL = High Lens  
 RL = Round Lens  
 LL = Low Lens  
 FL = Flash Light

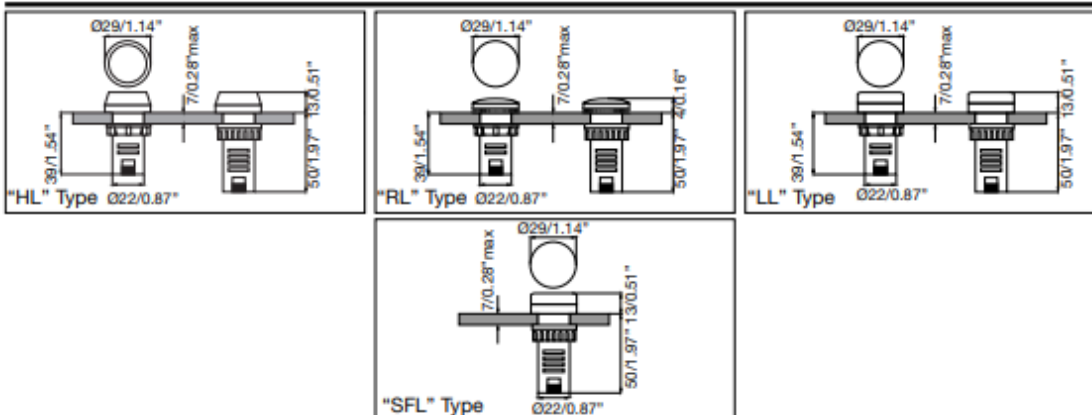
### Colours

R = Red  
 W = Clear/White  
 B = Blue  
 Y = Yellow  
 G = Green

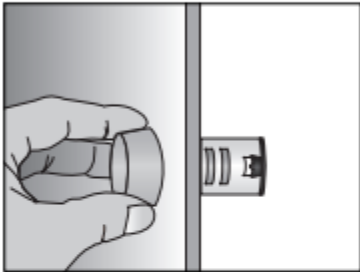
### Voltages

12 = 12VAC/DC  
 24 = 24VAC/DC  
 110 = 110VAC/DC  
 220A = 220VAC

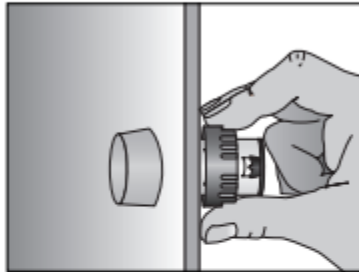
### Dimensions mm/inches



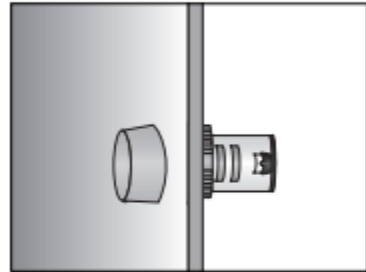
## Mounting



Just insert the pilot light into the hole of the panel.

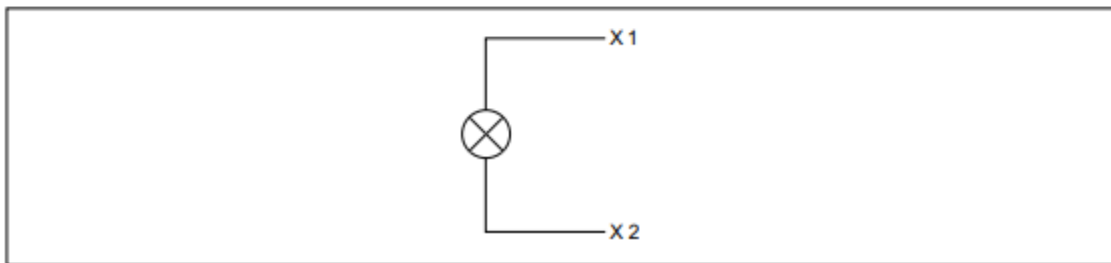


The pilot light will be secured at the back by the plastic nut



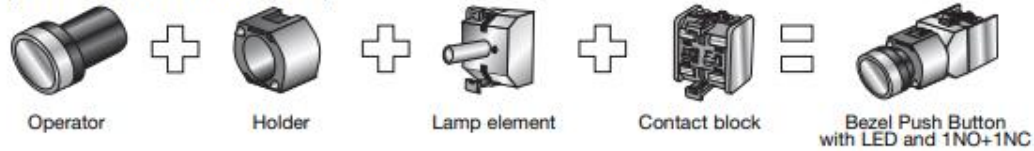
The pilot light has been installed.

## Wiring Diagram



## Assembling and Mounting

It come easy to get a complete product. Just to choose the operator, the holder, the lamp element if illuminated function is required and the contact block (up to 3).



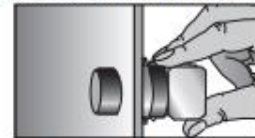
To install it, the only tool needed is a screwdriver. The same used to wiring the contact block can be used to fix the push-button.



The operator will be inserted into the panel.



The holder will be secured at the back by two screws or nut.



The contact block is snapped on.

## Accessories for Panel Actuators



### Sealing cover IP67

Always on the head of operators, waterproof and dust, IP67. Silicon rubber

PA SEAL COV



### Protection cover

Always on the head of button, prevent strike and mistaking operation. Lockable.

PC

PA PB COV



### Mounting ring Ø22mm (0.87")

Installed on plastic panel to strengthen mounting.

FE

PA MR 22



### Reducing ring for Pilot Light Ø22mm (0.87")

To mount the Ø22mm (0.87") pilot light into the hole for Ø25mm (0.98") or Ø30mm (1.18") of the panel.

ABS

Ø30mm/Ø1.18"

PA RR 3



### Fastening connector for Pilot Light Ø22mm (0.87")

Improve the quality of installation and reduce the time of installations.

PC

PA PL CONN



### Label frame

Hang it on the push button or pilot light, for symbol or text explanation.

PC

10mm/0.39"

PA LBF 11

18mm/0.71"

PA LBF 18



### Warning plate

For emergency stop push buttons. Thickness 1.5mm/0.059"

ABS

Ø60mm/Ø2.36"

PA WP 6

Ø90mm/Ø3.54"

PA WP 9



### Panel hole cap Ø22mm (0.87")

For blocking up prepared or useless holes on the panels.

ABS

PA PHC 22



# Panel Actuators and Indicators

## Type PA2

### Contact Block

CARLO GAVAZZI



- High switching power
- Double switch
- Industrial applications
- 10A switching capacity
- Up to 500VAC
- Modular mounting (up to 3 elements)
- Screw terminals
- High reliability
- cULus and CE
- According to EN ISO 13850 (only NC slow action)
- IEC/EN 60947-5-1, IEC/EN 60947-5-5, UL 508

\* Not all configurations available – see page 6 for complete list

### Product description

Switching element equipped with two independent elements. Available in different switching configurations. Pole and throw configurations can be single pole single throw (SPST) or double pole single throw (DPST). Elements can be snapped to each other on the bottom, up to 3.

### Approvals



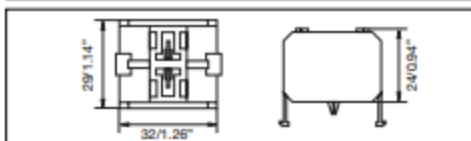
### Technical data

|   |  |
|---|--|
| Contact resistance                            | ≤50mΩ  |
| Travel  | 5.8 ± 0.2mm (2.28" ± 0.08")                                    |
| Rated insulation Voltage U <sub>i</sub>       | 660VAC/DC (acc. to IEC 60947-5-1)<br>600VAC/DC (acc. to UL508) |
| Rated imp. withstand voltage U <sub>imp</sub> | 2500VAC 50Hz 1min.   |
| Minimum switching power                       |  |
| Min Current                                   | 100mA  |
| Min Voltage                                   | 24V  |
| Switch housing                                | PC   |
| Contact parts                                 | Cu   |
| Contact material                              |  |
| Standard                                      | Hard silver  |
| Optional                                      | Gold/silver  |
| Optional for aggressive atmospheres           | Silver/palladium   |
| Operating temperature                         | -25 to +70°C (-13 to +158°F)                                   |
| Storage temperature                           | -30 to +80°C (-22 to +176°F)                                   |

### Terminals

|                               |                                       |
|-------------------------------|---------------------------------------|
| <b>Screw terminals</b>        |                                       |
| Max. section single-core wire | 2 x 2.5mm <sup>2</sup> (0.004sq.inch) |
| Max. section stranded wire    | 2 x 1.5mm <sup>2</sup> (0.002sq.inch) |
| Copper conductor wire         | 14 AWG @ 60°C or 75°C                 |
|                               | CU conductor                          |
| Terminal tightening torque    | 1.2Nm (10.6in.lb.)                    |

### Dimensions mm/inches



### Ordering key

PA 2 110 / 1 \*

Type \_\_\_\_\_  
 Number of contacts \_\_\_\_\_  
 Contact code \_\_\_\_\_  
 Options ( 1 = Snap action  
 2 = Slow action with forced opening Ⓞ NC contact)

### Contact code

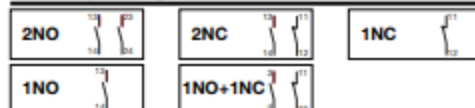
| Contact configuration       | Contact code |
|-----------------------------|--------------|
| 2 NO contacts (DPST)        | 200          |
| 2 NC contacts (DPST)        | 020          |
| 1 NC contact (SPST)         | 010          |
| 1 NO contact (SPST)         | 100          |
| 1 NC + 1 NO contacts (DPST) | 110          |

### Contact characteristics

| Contact Rating AC1                        | 10A @ 250VAC |             |  |
|---|--------------|-------------|--|
| Contact Rating                            | AC15         | DC13        |  |
| (acc. to IEC 60947-5-1)                   | @ 24V 10A    | 6A          |  |
|   | @ 110V 8A    | 1A          |  |
|   | @ 220V 6A    | 0.5A        |  |
|   | @ 380V 4A    | -           |  |
|   | @ 500V 2.5A  | -           |  |
| <b>AC Contact Rating</b> (acc. to UL 508) | <b>A600</b>  | <b>B600</b> |  |
| <b>B600</b> (all snap codes)              | @ 120V 6A    | 3A          |  |
| <b>A600</b> (all slow codes)              | @ 240V 3A    | 1.5A        |  |
|   | @ 480V 1.5A  | 0.75A       |  |
|   | @ 600V 1.2A  | 0.6A        |  |
| <b>DC Contact Rating</b> (acc. to UL 508) | <b>Q600</b>  | <b>Q300</b> |  |
| <b>Q600</b> (all snap codes)              | @ 125V 0.55A | 0.55A       |  |
| <b>Q600</b> (100, 200 slow codes)         | @ 250V 0.27A | 0.27A       |  |
| <b>Q300</b> (010, 020, 110 slow codes)    | @ 480V 0.10A | -           |  |
|   | @ 600V 0.10A | -           |  |

| Contact rating code designation | Terminal pitch (mm/inches) | Maximum current, amperes (acc. to UL508) |      |      |      |   |      |      |     | Maximum volt-amperes |       |
|---------------------------------|----------------------------|--|------|------|------|---|------|------|-----|----------------------|-------|
|                                 |                            | 120V                                     |      | 240V |      | 480V  |      | 600V |     | Make                 | Break |
| A600                            | 10                         | 60                                       | 6.00 | 30   | 3.00 | 15  | 1.5  | 12   | 1.2 | 7200                 | 720   |
| B600                            | 5                          | 30                                       | 3.00 | 15   | 1.50 | 7.50  | 0.75 | 6    | 0.6 | 3600                 | 360   |
| Contact rating code designation | Terminal pitch (mm/inches) | Maximum current, amperes (acc. to UL508) |      |      |      | Maximum make or break volt-amperes @ 300V or less |      |      |     |                      |       |
|                                 |                            | 125V                                     |      | 250V |      | 301 to 600V                                       |      |      |     |                      |       |
| Q600                            | 2.5                        | 0.55                                     | 0.27 | 0.10 | 69   | 69  |      |      |     |                      |       |
| Q300                            | 2.5                        | 0.55                                     | 0.27 | -    | -    | 69  |      |      |     |                      |       |

### Wiring diagram



# AVAILABLE PORTFOLIO CONFIGURATIONS

## Flush Round Push Buttons

|           |           |
|-----------|-----------|
| PB22BF0B  | PB22BIF0Y |
| PB22BF0G  | PB22SF0B  |
| PB22BF0K  | PB22SF0G  |
| PB22BF0R  | PB22SF0K  |
| PB22BF0W  | PB22SF0R  |
| PB22BF0Y  | PB22SF0Y  |
| PB22BIF0B | PB22SIF0G |
| PB22BIF0G | PB22SIF0R |
| PB22BIF0R | PB22SIF1G |
| PB22BIF0W |           |

## Extended Push Buttons

|           |           |
|-----------|-----------|
| PB22BE0G  | PB22BIE0Y |
| PB22BE0K  | PB22SIE0G |
| PB22BE0R  | PB22SIE0R |
| PB22BIE0R |           |

## Red Emergency Stop Push Buttons

|             |            |
|-------------|------------|
| PB22BEM41R  | PB22SEM41R |
| PB22BEM61R  | PB22SEM61R |
| PB22BKEM41R |            |

## Mushroom Push Buttons

|            |             |
|------------|-------------|
| PB22BIM41R | PB22SM40K   |
| PB22BM40G  | PB22SM40R   |
| PB22BM40R  | PB22SM41G   |
| PB22BM41R  | PB22SM41R   |
| PB22BM60R  | PB22SPPM41R |
| PB22SIM40R | PB22SPPM61R |
| PB22SIM41R |             |

## Buzzer and Flashing Buzzer

|              |               |
|--------------|---------------|
| PL22SBZK110  | PL22SFBZR110  |
| PL22SBZK12   | PL22SFBZR12   |
| PL22SBZK220A | PL22SFBZR220A |
| PL22SBZK24   | PL22SFBZR24   |

## Two Color Pilot Lights

|               |             |
|---------------|-------------|
| PL22STCRG110  | PL22STCRG24 |
| PL22STCRG220A |             |

## Pilot Lights

|              |              |
|--------------|--------------|
| PL22CHLB110  | PL22SFLG24   |
| PL22CHLB24   | PL22SFLR110  |
| PL22CHLG110  | PL22SFLR24   |
| PL22CHLG24   | PL22SFLW110  |
| PL22CHLR110  | PL22SFLW24   |
| PL22CHLR24   | PL22SFLY110  |
| PL22CHLW110  | PL22SFLY24   |
| PL22CHLW24   | PL22SHLG110  |
| PL22CHLY110  | PL22SHLG220A |
| PL22CHLY24   | PL22SHLG24   |
| PL22CLLB220A | PL22SHLR110  |
| PL22CLLB24   | PL22SHLR12   |
| PL22CLLG110  | PL22SHLR220A |
| PL22CLLG220A | PL22SHLR24   |
| PL22CLLG24   | PL22SHLW110  |
| PL22CLLR110  | PL22SHLW24   |
| PL22CLLR220A | PL22SHLY110  |
| PL22CLLR24   | PL22SHLY24   |
| PL22CLLW110  | PL22SLLG110  |
| PL22CLLW220A | PL22SLLG220A |
| PL22CLLW24   | PL22SLLG24   |
| PL22CLLY110  | PL22SLLR110  |
| PL22CLLY12   | PL22SLLR220A |
| PL22CLLY220A | PL22SLLR24   |
| PL22CLLY24   | PL22SLLW24   |
| PL22CRLB24   | PL22SLLY24   |
| PL22SFLB24   | PL22SRLR110  |
| PL22SFLG110  |              |

## Short-Handle Selector Switches

|              |              |
|--------------|--------------|
| PB22BSRS21K  | PB22SISRS21W |
| PB22BSRS22K  | PB22SISRS31G |
| PB22BSRS31K  | PB22SSRS21K  |
| PB22BSRS33K  | PB22SSRS31K  |
| PB22SISRS21R | PB22SSRS32K  |

## Long-Handle Selector Switches

|             |             |
|-------------|-------------|
| PB22BLRS21K | PB22SLRS31K |
| PB22BLRS31K | PB22SLRS32K |
| PB22SLRS21K |             |

## I/O Push Buttons

|            |             |
|------------|-------------|
| PB22SIO0RG | PB22SIOL0RG |
|------------|-------------|

## Key Selector Switches

|              |              |
|--------------|--------------|
| PB22SKRS21KL | PB22SKRS21KR |
|--------------|--------------|

## Push Button Boxes

|           |           |
|-----------|-----------|
| PBBOX1HBG | PBBOX3HBY |
| PBBOX1HBY | PBBOX4HBG |
| PBBOX2HBG | PBBOX4HBY |
| PBBOX2HBY | PBBOX5HBG |
| PBBOX3HBG |           |

## Lamp Element

|             |            |
|-------------|------------|
| PALAMPB110  | PALAMPR24  |
| PALAMPB24   | PALAMPW110 |
| PALAMPG110  | PALAMPW12  |
| PALAMPG220A | PALAMPW24  |
| PALAMPG24   | PALAMPY110 |
| PALAMPR110  | PALAMPY24  |
| PALAMPR220A |            |

## Contact Block

|          |          |
|----------|----------|
| PA2010/1 | PA2100/2 |
| PA2010/2 | PA2110/1 |
| PA2020/1 | PA2110/2 |
| PA2020/2 | PA2200/1 |
| PA2100/1 | PA2200/2 |

## Accessories

|           |          |
|-----------|----------|
| PASEALCOV | PAWP6    |
| PAPBCOV   | PAWP9    |
| PAMR22    | PAPHC22  |
| PALBF11   | PARR3    |
| PALBF18   | PAPLCONN |

## Holders

|       |       |
|-------|-------|
| PBMBM | PBMBP |
| PBMBN |       |