

# 9400-9600 series

Momentary pushbutton switches



## DISTINCTIVE FEATURES

Two case lengths

Three electrical functions

Sealing options

Model X1146 with Ø 16 (.630) bushing



## ELECTRICAL SPECIFICATIONS

- Max. current/voltage rating with resistive load :
  - silver contact (A) : 1 A 30 VDC
  - gold plated contacts (CD) : 100 mA 30 VDC
- Initial contact resistance : 50 mΩ max.
- Insulation resistance : 1,000 MΩ min. at 500 VDC
- Dielectric strength :
  - 1,000 Vrms 50 Hz min. between terminals
  - 1,500 Vrms 50 Hz min. between terminals and frame
- Electrical life : 250,000 cycles



## GENERAL SPECIFICATIONS

- Total travel :

9600-9400-9400Y		9600N-9400N
Functions 3 and 5	Function 2	Function 3
1.3 mm	2 mm	0.9 mm

- Torque : 1.25 Nm (.922 Ft.lb) max. applied to nut
- Operating temperature : -30 °C to +65 °C (-22 °F to +149 °F)



## MATERIALS

- Case : thermoplastic UL94-V0
- Actuator : polyamide, glass filled
- Bushing : brass, nickel plated
- Contacts :
  - A : silver
  - CD : brass, gold plated
- Terminal seal : epoxy

APEM products may be recycled at end-of-life for the re-claiming of valuable metal components.

The company reserves the right to change specifications without notice.

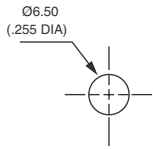


# 9400-9600 series

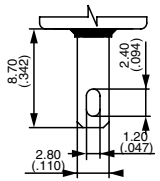
Momentary pushbutton switches



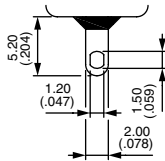
## PANEL CUT-OUT



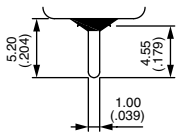
## TERMINALS



9600Z1



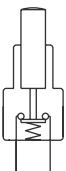
9600



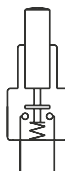
9400



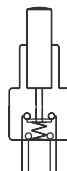
## ELECTRICAL FUNCTIONS



Function 2 (NC)



Function 3 (NO)



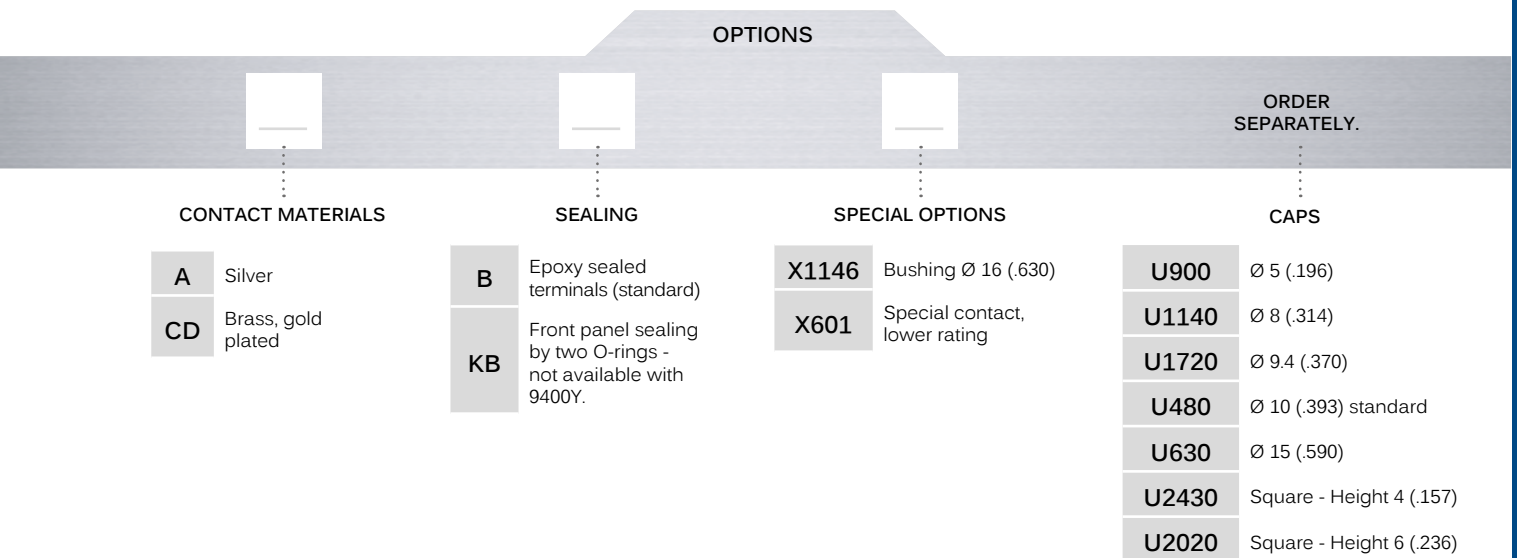
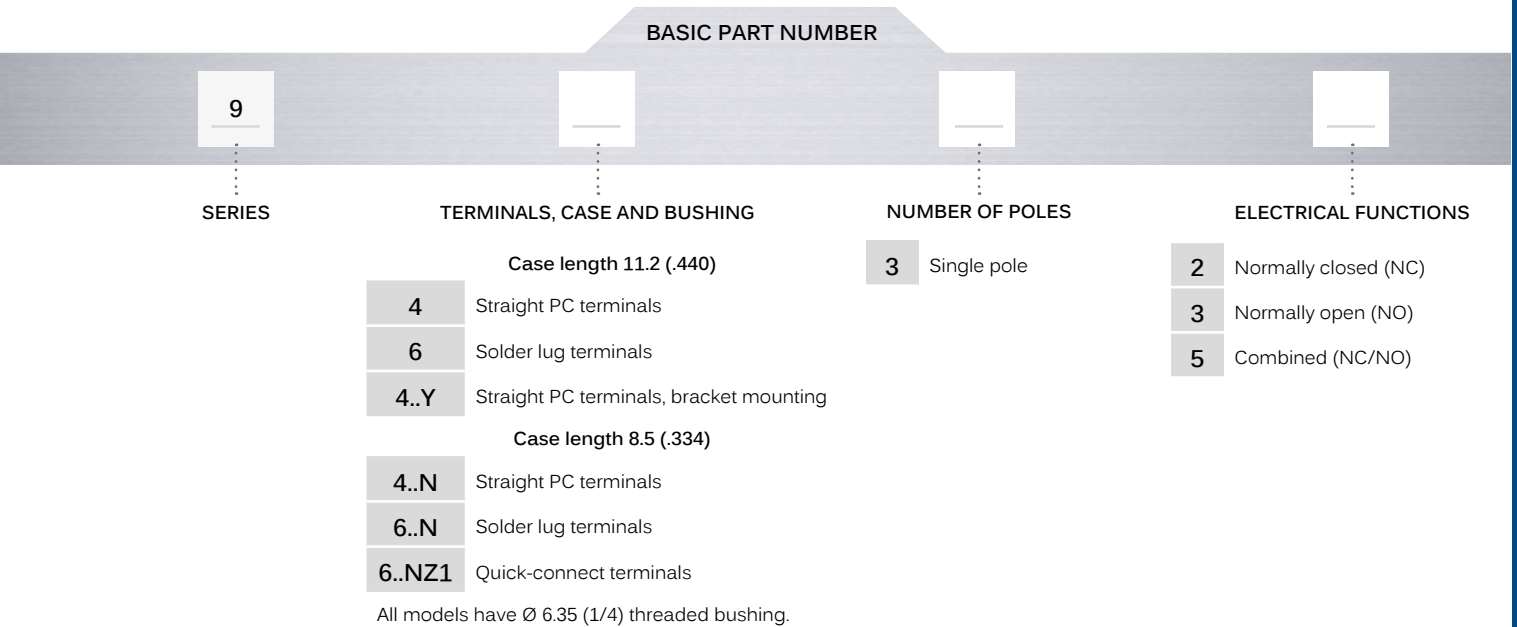
Function 5 (combined)

# 9400-9600 series

Momentary pushbutton switches



## BUILD YOUR PART NUMBER



## ABOUT THIS SERIES

On the following pages, you will find successively basic part numbers of switches and options in the same order as in above chart.

- Notice** : please note that not all combinations of above numbers are available. Refer to the following pages for further information.
- Sealing boots** are available to protect the switches against dust and water. See "Sealing Boots" section of website.
- Mounting accessories** : standard hardware supplied with all models : 2 hex nuts 8 mm (.314) across flats and 1 lockwasher. Standard and special hardware available is presented in the "Hardware" section of website.

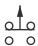
# 9400-9600 series

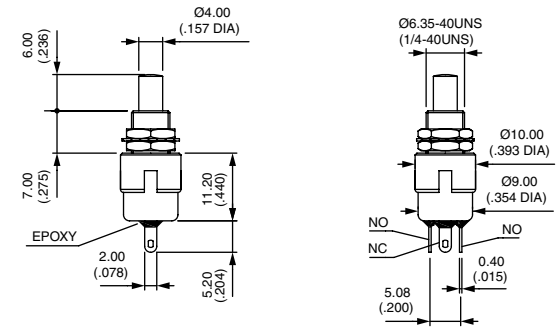
Momentary pushbutton switches

## SOLDER LUG TERMINALS CASE LENGTH 11.2 (.440) : 9600



9632 B  Normally Closed

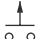
9635 B  Combined function

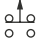


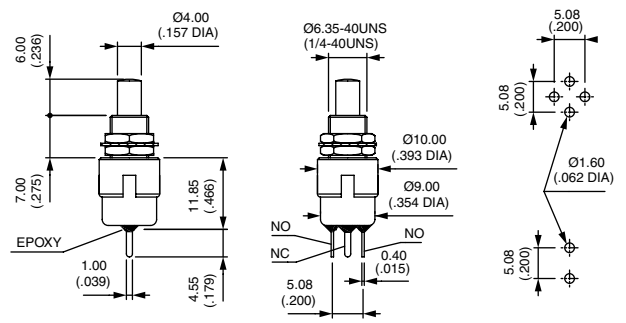
## STRAIGHT PC TERMINALS CASE LENGTH 11.2 (.440) : 9400



9432 B  Normally Closed

9433 B  Normally Open

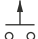
9435 B  Combined function



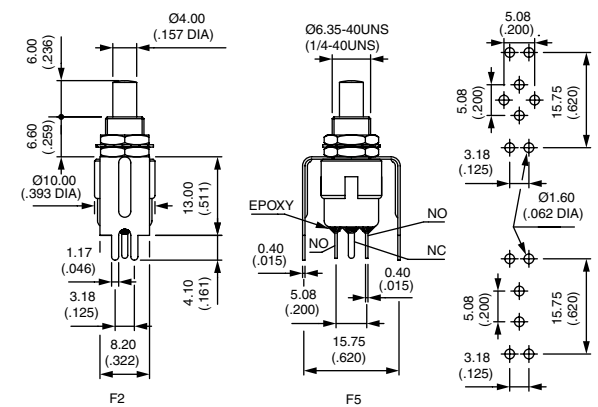
## BRACKET MOUNTING CASE LENGTH 11.2 (.440) : 9400Y



9432Y B  Normally Closed

9433Y B  Normally Open

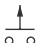
9435Y B  Combined function

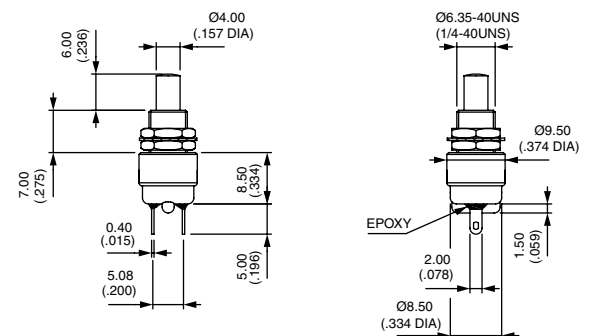


The bracket is not fastened to the switch.

## SOLDER LUG TERMINALS CASE LENGTH 8.5 (.334) : 9600N



9633N B  Normally Open



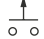
Also available with quick-connect terminals 2.8 x 0.5 mm : 9633NZ1

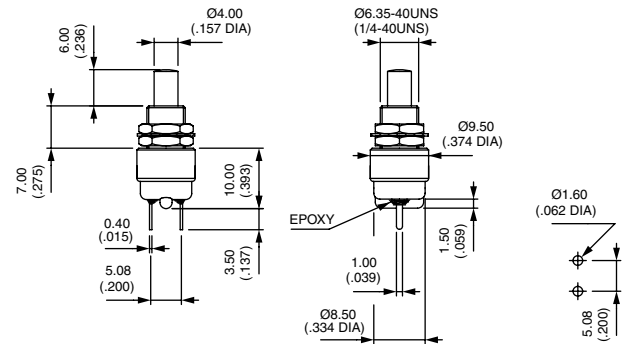
# 9400-9600 series

Momentary pushbutton switches

## STRAIGHT PC TERMINALS CASE LENGTH 8.5 (.334) : 9400N

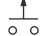



**9433N B**  Normally Open

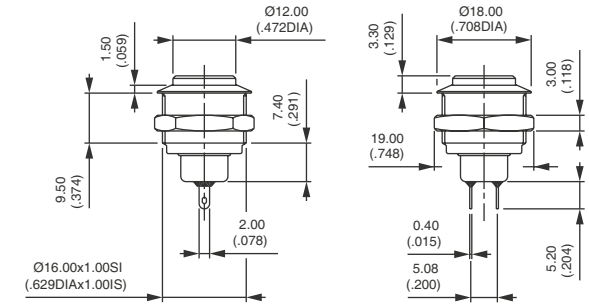


## BUSHING Ø 16 (.630) METAL PLUNGER : 9633•X1146



Silver contact  
**9633ABX1146**  Normally Open

Gold plated silver contacts  
**9633ADBX1146**  Normally Open



Panel cut-out : Ø 16.2 (.637)  
Max. current/voltage rating. : 1 A 30 VDC  
Epoxy sealed terminals. Options of the following pages not applicable.

Hex nut 19 (.748) across flats

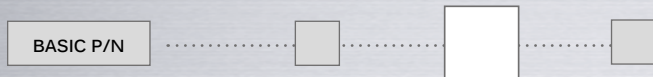
### CONTACTS MATERIALS



- A Silver
- CD Brass, gold plated

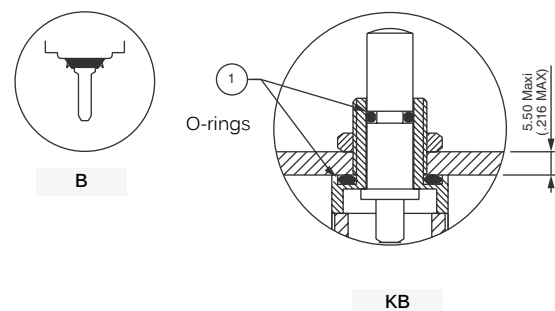
Special contact, lower rating : see X601 under "Special options".

### SEALING



- B Epoxy sealed terminals (standard)
- KB Combined sealings  
Epoxy sealed terminals + front panel sealing by two O-rings. Protects the switch against water and dust. Panel seal withstands 0.1 bar pressure. Option KB not available on 9400Y model.

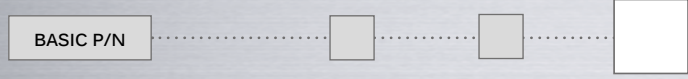
Sealing boots : see "Sealing boots" section of website.



# 9400-9600 series

Momentary pushbutton switches

## SPECIAL OPTIONS



**X601** Silver plated brass contacts  
 Current/voltage rating for an electrical life of 20,000 cycles : 0.5 A 30 VDC.  
 Minimum quantity : 5,000 pieces per model and shipment.

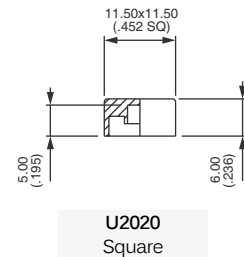
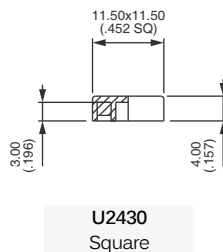
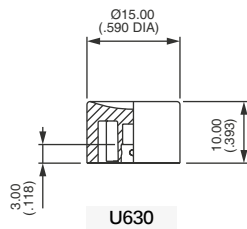
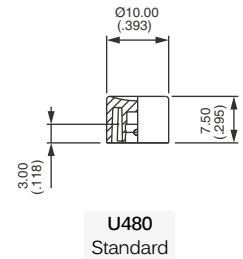
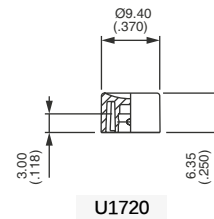
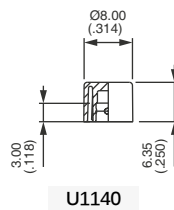
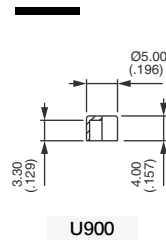
**X1146** Model with dia. 16 (.630) bushing and metal plunger  
 See previous page.

## CAPS

Order separately.

For cap colors, replace last "0" by number :

- 1 Blue
- 1/4 Dark blue
- 2 Black
- 3 Green
- 4 Grey
- 5 Yellow
- 6 Red
- 7 Ivory
- 7/1 White
- 9 Orange



## DRESS NUTS

Order separately. Chrome plated.

