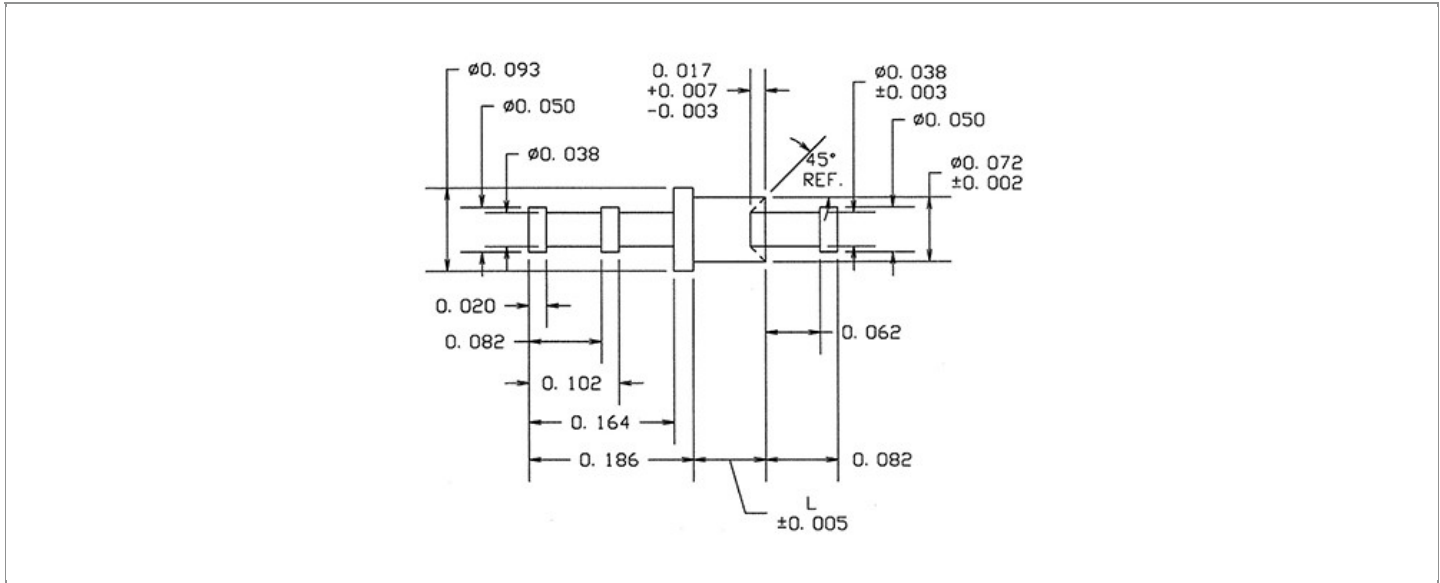


DRAWING NUMBER:	15-502-X-XX
PRODUCT GROUP:	TERMINALS
SUB-GROUP:	MILITARY NON-INSULATED TERMINALS
DESCRIPTION:	NON-INSULATED FEED THRU (TURRET/DOUBLE TURRET) TERMINAL



BOARD / PANEL MOUNTING METHOD	MOUNTING HOLE SIZE	DRILL SIZE	FEED THRU COMBINATION
SWAGE MOUNT	0.076" ± 0.001	#48	TURRET/DOUBLE TURRET

PART NO. STRUCTURE:

15-502 - X - XX
 PART SERIES DIMENSION FINISH

MATERIAL OPTIONS:

15-502-X-XX

COMPONENT	MATERIAL	MATERIAL AND SPECIFICATION
TERMINAL	BRASS	BRASS PER ASTM B16, ALLOY C36000, 1/2 HARD

DIMENSION OPTIONS:

15-502-X-XX

DIMENSION	K	OVERALL LENGTH	SHANK LENGTH (L)	BOARD/PANEL THICKNESS
2	N/A	0.350"	0.082"	1/16"
3	N/A	0.381"	0.113"	3/32"
4	N/A	0.413"	0.145"	1/8"

FINISH - PLATING OPTIONS:

15-502-X-XX

FINISH CODE	COMPONENT	FINISH	FINISH AND SPECIFICATION
05	TERMINAL	ELECTRO-SOLDER	0.000300"MIN. ELECTRO-SOLDER PER SAE-AMS-P-81728 OVER 0.000100"MIN. COPPER PER SAE-AMS-2418
088	TERMINAL	BRIGHT TIN-LEAD	0.000300"MIN. BRIGHT TIN-LEAD (Sn93%-Pb7%) PER ASTM B545 OVER 0.000100"MIN. COPPER PER SAE-AMS-2418
095	TERMINAL	HOT SOLDER DIP	0.000100"MIN. HOT SOLDER DIP USING Sn60 PER IPC-J-STD-006 OVER 0.000100"MIN. COPPER PER SAE-AMS-2418

TOLERANCES:*

DECIMAL	FRACTIONAL	ANGULAR	DRAWING ORIGATION DATE	LAST MODIFICATION DATE
± 0.005	N/A	± 3 °	11/1/2002	3/1/2017

*All dimensions are in inches.

RoHS COMPLIANCE:

15-502-2-XX

PART NUMBER	RoHS COMPLIANT
15-502-2-05	NO
15-502-2-088	NO
15-502-2-095	NO

15-502-3-XX

PART NUMBER	RoHS COMPLIANT
15-502-3-05	NO
15-502-3-088	NO
15-502-3-095	NO

15-502-4-XX

PART NUMBER	RoHS COMPLIANT
15-502-4-05	NO
15-502-4-088	NO
15-502-4-095	NO

MILITARY REFERENCE SPECIFICATIONS:

15-502-2-XX

PART NUMBER	MIL SPECIFICATION	MIL PART NUMBER	COMMERCIAL ITEM DESCRIPTION (CID) SPECIFICATION	CID PART NUMBER
15-502-2-05	MIL-T-55155/14	M55155/14XH01 (M55155/14-1S; SE14XC01S)	A-A-59126/14	AA59126/14XH01
15-502-2-088	MIL-T-55155/14	M55155/14XJ01	A-A-59126/14	AA59126/14XJ01 (AA59126/1401)
15-502-2-095	MIL-T-55155/14	M55155/14XI01	A-A-59126/14	AA59126/14XI01

15-502-3-XX

PART NUMBER	MIL SPECIFICATION	MIL PART NUMBER	COMMERCIAL ITEM DESCRIPTION (CID) SPECIFICATION	CID PART NUMBER
15-502-3-05	MIL-T-55155/14	M55155/14XH02 (M55155/14-2S; SE14XC02S)	A-A-59126/14	AA59126/14XH02
15-502-3-088	MIL-T-55155/14	M55155/14XJ02	A-A-59126/14	AA59126/14XJ02 (AA59126/1402)
15-502-3-095	MIL-T-55155/14	M55155/14XI02	A-A-59126/14	AA59126/14XI02

Continued on next page...

MILITARY REFERENCE SPECIFICATIONS CONTINUED:

15-502-4-XX

PART NUMBER	MIL SPECIFICATION	MIL PART NUMBER	COMMERCIAL ITEM DESCRIPTION (CID) SPECIFICATION	CID PART NUMBER
15-502-4-05	MIL-T-55155/14	M55155/14XH03 (M55155/14-3S; SE14XC03S)	A-A-59126/14	AA59126/14XH03
15-502-4-088	MIL-T-55155/14	M55155/14XJ03	A-A-59126/14	AA59126/14XJ03 (AA59126/1403)
15-502-4-095	MIL-T-55155/14	M55155/14XI03	A-A-59126/14	AA59126/14XI03

TOOLING:

INSTALLATION TOOL: ARBOR PRESS	INSTALLATION TOOL: ANVIL (ARBOR PRESS OPERATED)	INSTALLATION TOOL: PRESS-FIT / ROLL SWAGE / RIVET PUNCH (ARBOR PRESS OPERATED)	INSTALLATION TOOL: FLARE SWAGE PUNCH (ARBOR PRESS OPERATED)
TM1	TA94-50-20	TP72-T50	N/A

NOTES:

DATASHEET NOTES
N/A

INSTRUCTION NOTES
SEE GENERAL SWAGING INSTALLATION INSTRUCTION ON CONCORD ELECTRONICS' WEBSITE WWW.CONCORD-ELECTRONICS.COM