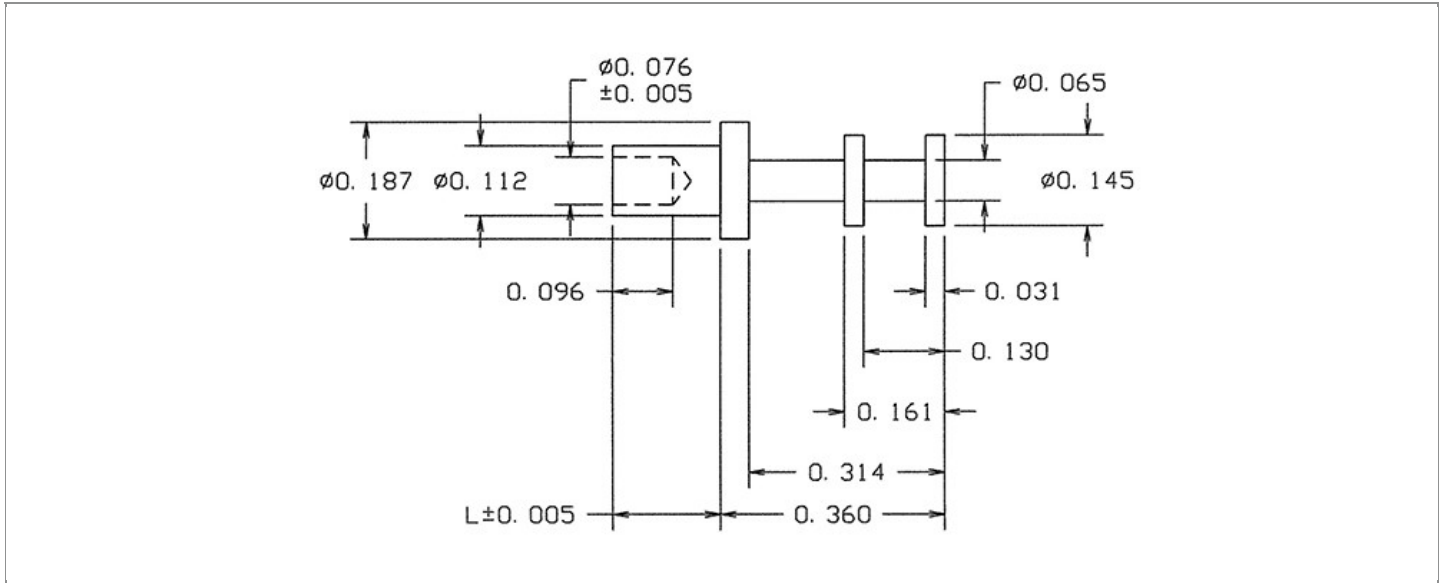


<b>DRAWING NUMBER:</b>	<b>15-204-X-XX</b>
<b>PRODUCT GROUP:</b>	TERMINALS
<b>SUB-GROUP:</b>	MILITARY NON-INSULATED TERMINALS
<b>DESCRIPTION:</b>	NON-INSULATED DOUBLE TURRET TERMINAL



BOARD / PANEL MOUNTING METHOD	MOUNTING HOLE SIZE	DRILL SIZE	FEED THRU COMBINATION
SWAGE MOUNT	0.116" ± 0.001	#32	N/A

**PART NO. STRUCTURE:**

15-204 - X - XX  
 PART SERIES    DIMENSION    FINISH

**MATERIAL OPTIONS:**

15-204-X-XX

COMPONENT	MATERIAL	MATERIAL AND SPECIFICATION
TERMINAL	BRASS	BRASS PER ASTM B16, ALLOY C36000, 1/2 HARD

**DIMENSION OPTIONS:**

15-204-X-XX

DIMENSION	K	OVERALL LENGTH	SHANK LENGTH (L)	BOARD/PANEL THICKNESS
2	N/A	0.469"	0.109"	1/16"
3	N/A	0.501"	0.141"	3/32"
4	N/A	0.532"	0.172"	1/8"

FINISH - PLATING OPTIONS:

15-204-X-XX

FINISH CODE	COMPONENT	FINISH	FINISH AND SPECIFICATION
05	TERMINAL	ELECTRO-SOLDER	0.000300"MIN. ELECTRO-SOLDER PER SAE-AMS-P-81728 OVER 0.000100"MIN. COPPER PER SAE-AMS-2418
088	TERMINAL	BRIGHT TIN-LEAD	0.000300"MIN. BRIGHT TIN-LEAD (Sn93%-Pb7%) PER ASTM B545 OVER 0.000100"MIN. COPPER PER SAE-AMS-2418
095	TERMINAL	HOT SOLDER DIP	0.000100"MIN. HOT SOLDER DIP USING Sn60 PER IPC-J-STD-006 OVER 0.000100"MIN. COPPER PER SAE-AMS-2418

TOLERANCES:\*

DECIMAL	FRACTIONAL	ANGULAR	DRAWING ORIGATION DATE	LAST MODIFICATION DATE
± 0.005	N/A	± 3 °	11/17/1997	3/1/2017

\*All dimensions are in inches.

RoHS COMPLIANCE:

15-204-2-XX

PART NUMBER	RoHS COMPLIANT
15-204-2-05	NO
15-204-2-088	NO
15-204-2-095	NO

15-204-3-XX

PART NUMBER	RoHS COMPLIANT
15-204-3-05	NO
15-204-3-088	NO
15-204-3-095	NO

15-204-4-XX

PART NUMBER	RoHS COMPLIANT
15-204-4-05	NO
15-204-4-088	NO
15-204-4-095	NO

MILITARY REFERENCE SPECIFICATIONS:

15-204-2-XX

PART NUMBER	MIL SPECIFICATION	MIL PART NUMBER	COMMERCIAL ITEM DESCRIPTION (CID) SPECIFICATION	CID PART NUMBER
15-204-2-05	MIL-T-55155/12	M55155/12XH07 (M55155/12-7S; SE12XC07S)	A-A-59126/12	AA59126/12XH07
15-204-2-088	MIL-T-55155/12	M55155/12XJ07	A-A-59126/12	AA59126/12XJ07 (AA59126/1207)
15-204-2-095	MIL-T-55155/12	M55155/12XI07	A-A-59126/12	AA59126/12XI07

15-204-3-XX

PART NUMBER	MIL SPECIFICATION	MIL PART NUMBER	COMMERCIAL ITEM DESCRIPTION (CID) SPECIFICATION	CID PART NUMBER
15-204-3-05	MIL-T-55155/12	M55155/12XH08 (M55155/12-8S; SE12XC08S)	A-A-59126/12	AA59126/12XH08
15-204-3-088	MIL-T-55155/12	M55155/12XJ08	A-A-59126/12	AA59126/12XJ08 (AA59126/1208)
15-204-3-095	MIL-T-55155/12	M55155/12XI08	A-A-59126/12	AA59126/12XI08

Continued on next page...

MILITARY REFERENCE SPECIFICATIONS CONTINUED:

15-204-4-XX

PART NUMBER	MIL SPECIFICATION	MIL PART NUMBER	COMMERCIAL ITEM DESCRIPTION (CID) SPECIFICATION	CID PART NUMBER
15-204-4-05	MIL-T-55155/12	M55155/12XH09 (M55155/12-9S; SE12XC09S)	A-A-59126/12	AA59126/12XH09
15-204-4-088	MIL-T-55155/12	M55155/12XJ09	A-A-59126/12	AA59126/12XJ09 (AA59126/1209)
15-204-4-095	MIL-T-55155/12	M55155/12XI09	A-A-59126/12	AA59126/12XI09

TOOLING:

INSTALLATION TOOL: ARBOR PRESS	INSTALLATION TOOL: ANVIL (ARBOR PRESS OPERATED)	INSTALLATION TOOL: PRESS-FIT / ROLL SWAGE / RIVET PUNCH (ARBOR PRESS OPERATED)	INSTALLATION TOOL: FLARE SWAGE PUNCH (ARBOR PRESS OPERATED)
TM1	TA188-146-31	TP112-78	TFLP90-200

NOTES:

<b>DATASHEET NOTES</b>
------------------------

N/A

<b>INSTRUCTION NOTES</b>
--------------------------

SEE GENERAL SWAGING INSTALLATION INSTRUCTION ON CONCORD ELECTRONICS' WEBSITE [WWW.CONCORD-ELECTRONICS.COM](http://WWW.CONCORD-ELECTRONICS.COM)