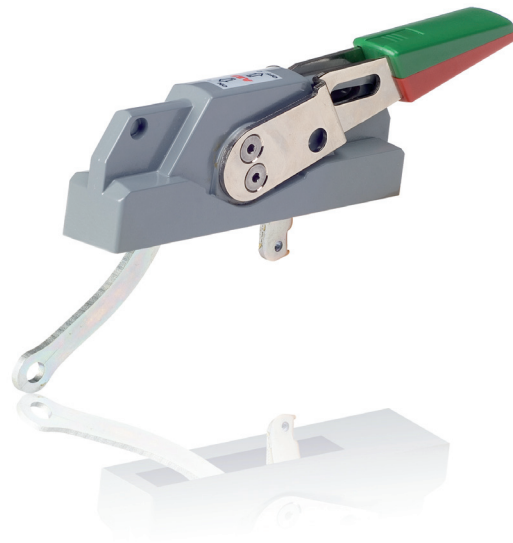


Tmax - Molded Case Circuit Breakers Cable Operated Flange Configurations

ABB Low Voltage Products and Systems is pleased to introduce the new line of cable operated flange handles, cables and mechanisms compatible with Tmax Molded Case Circuit Breakers (T1, T2, Ts3, T4, T5).

New Flange Cable Operated Range

- Modern design
- 2 Handle types
 - NEMA 1, 3R, 12 - Gray painted
 - NEMA 4/4X - Nickel coated
- 7 Cable lengths
 - Mounting flexibility
 - 36" to 108" cables for molded case circuit breakers
- Merchandised component part structure, a complete assembly will require ordering:
 - 1 Tmax breaker (T1-T5), 1 mechanism, 1 handle, 1 cable, 1 lug kit (where applicable)



Flange Handles – UL file # E116596

For use with	Environmental Rating	Catalog Number	List Price
T1, T2	NEMA 1, 3R, 12	OHF1C12T	213
	NEMA 4 & 4X	OHF1C4T	243
T3	Available Q4 2010		
Ts3, T4, T5	NEMA 1, 3R, 12	OHF1C12	213
	NEMA 4 & 4X	OHF1C4	243
T6*	NEMA 1, 3R, 12	K7FCH	310
	NEMA 4 & 4X	K7FCH4	415
T7, T8	Not Available		

*Not UL listed

Operating Mechanisms

For use with	Catalog Number	List Price
T1, T2	MKCT2	123
T3	Available Q4 2010	
Ts3, T4	MKCT4	148
T5	MKCT5	193
T6*	K6FPM	220
T7, T8	Not Available	

*Not UL listed

Flexible Cables

For use with	Cable Length (inches)	Catalog Number	List Price
T1, T2, Ts3, T4, T5	36	OXC1L36	114
	48	OXC1L48	146
	60	OXC1L60	160
	72	OXC1L72	175
	84	OXC1L84	204
	96	OXC1L96	221
	108	OXC1L108	238
T3	Available Q4 2010		
T6*	48	K7C048	190
	60	K7C060	220
	72	K7C072	256
	84	K7C084	270
	96	K7C096	320
T7, T8	120	K7C120	350
	Not Available		

*Not UL listed

Door Hardware

Item	Catalog Number
Safety door latch 2 point, door less than 40" high	KDH2R
Safety door latch 3 point, door less than 40" high	KDH3R

ABB Inc.
Low Voltage Control Products
16250 W. Glendale Drive
New Berlin, WI 53151
Phone: 888-385-1221
Web: www.abb.us/lowvoltage

USA LVP Technical help:
lvps.support@us.abb.com
888-385-1221, Option 4
7:30AM to 5:30 PM, CST,
Monday - Friday

1SXU210116D0201 REVA Effective 08/02/2010
Subject to change without notice