

EP/VP Series

**RFI Power Line Filters
for Switching Power Supply
Noise Suppression**



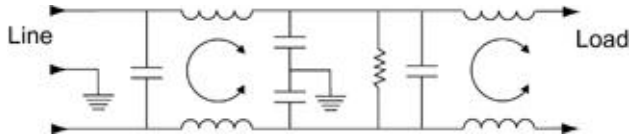
**UL Recognized
CSA Certified
VDE Approved
SEV Approved***

EP/VP Series

The EP/VP series of RFI filters has been developed to reduce conducted noise to acceptable limits for equipment that must comply with the requirements of CISPR in Europe and the FCC specifications in the USA.

These filters provide high insertion loss for both line-to-ground and line-to-line emissions throughout the frequency range. They are particularly well suited for equipment that must meet both stringent emissions specifications (such as CISPR 22, A-level and FCC Part 15J, Class B) and the EP models meet very low leakage current requirements.

Electrical Schematic



Resistor location for reference only.

Line Cord

Line Cord No. GA400:
7 1/2 foot, 3-conductor line cord.

EP
/P
36

*3, 6, 10A models only



EP1/VP1



EP7/VP7



EP3/VP3

Specifications

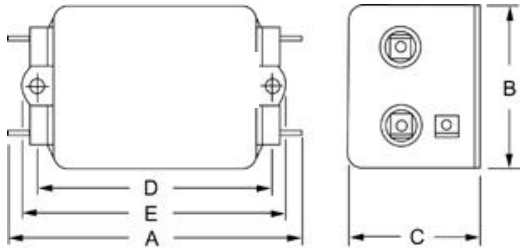
	VP Models	EP Models							
Maximum leakage current, each line-to-ground									
@ 120 VAC 60 Hz:	.73 mA	.21 mA							
@ 250 VAC 50 Hz:	1.27 mA	.36 mA							
Hipot rating (one minute):									
line-to-ground		2250 VDC							
line-to-line		1450 VDC							
Operating frequency:		50/60 Hz							
Rated voltage:		120/250 VAC							
Rated current:	@ 120 VAC	@ 250 VAC							
3EP	3A	3A							
6EP	6A	5A							
10EP	10A	8A							
20EP/VP	20A	20A							
Maximum rated current peaks:									
3EP		10A							
6EP		18A							
10EP		30A							
20EP/VP		60A							
Minimum insertion loss in dB:									
Line-to-ground in 50 ohm circuit									
Current Rating	Frequency-MHz								
	.01	.04	.05	.15	.5	1	5	10	30
EP									
3A	1	1	10	58	65	65	66	60	25
6A,10A	1	1	10	58	65	65	66	60	25
20A	3	6	6	28	50	55	60	55	55
VP									
20A	3	2	2	42	60	65	65	55	55
Line-to-line in 50 ohm circuit									
Current Rating	Frequency-MHz								
	.01	.09	.15	.5	1	5	10	20	30
EP1, EP3									
3A	1	5	36	65	65	65	65	58	58
6A,10A	1	5	30	65	65	65	65	35	35
20A	8	17	25	60	65	65	58	58	58
VP									
20A	8	17	25	60	65	65	58	58	58

Series EP/VP

Case Styles

Metric shown in italics.

EP1/VP1

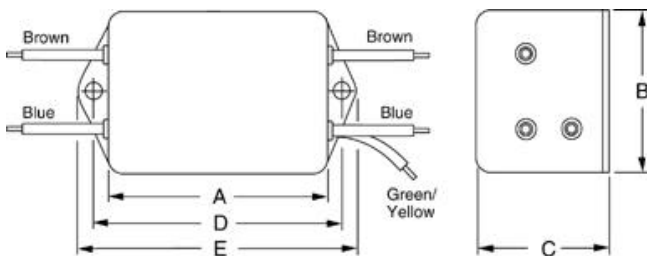


Typical dimensions

Terminals: $\frac{.250}{6.35}$ (5) Holes: $\frac{.07}{1.8}$ Dia. (4) Slot: $\frac{.07 \times .16}{1.8 \times 4.1}$

Mounting holes: $\frac{.188}{4.78}$ Dia. (2)

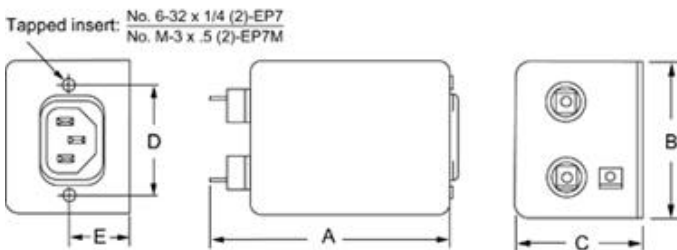
EP3



Typical dimensions

Wire leads $\frac{4.0}{101.6}$ Min. Mounting holes: $\frac{.188}{4.78}$ Dia. (2)

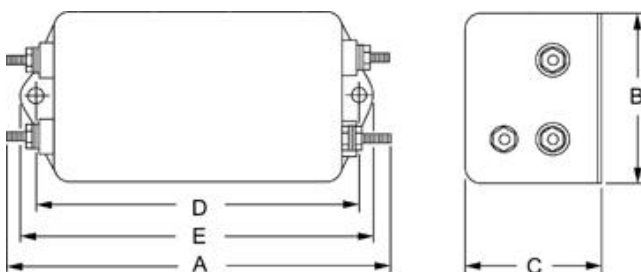
EP7 & EP7M (with metric insert)



Typical dimensions

Terminals: $\frac{.250}{6.35}$ (3) Holes: $\frac{.07}{1.8}$ Dia. (2) Slot: $\frac{.07 \times .16}{1.8 \times 4.1}$

20EP/VP6



Terminals: No. 8-32 (5)

Case Dimensions

Metric shown in italics.

Part No.	A (max)	B (max)	C (max)	D $\pm .015$ $\pm .38$	E (max)
3EP1	$\frac{3.85}{97.8}$	$\frac{2.07}{52.6}$	$\frac{1.78}{45.2}$	$\frac{2.938}{74.63}$	$\frac{3.35}{85.1}$
3EP3	$\frac{2.56}{65.0}$	$\frac{2.07}{52.6}$	$\frac{1.78}{45.2}$	$\frac{2.938}{74.63}$	$\frac{3.35}{85.1}$
3EP7	$\frac{3.21}{81.5}$	$\frac{2.25}{57.2}$	$\frac{1.78}{45.2}$	$\frac{1.575}{40.01}$	$\frac{0.63}{12.1}$ †
3EP7M	$\frac{3.21}{81.5}$	$\frac{2.25}{57.2}$	$\frac{1.78}{45.2}$	$\frac{1.575}{40.01}$	$\frac{0.63}{12.1}$ †
6EP1	$\frac{6.62}{168.1}$	$\frac{2.07}{52.6}$	$\frac{2.28}{57.9}$	$\frac{5.625}{142.88}$	$\frac{6.03}{153.2}$
6EP3	$\frac{5.33}{135.4}$	$\frac{2.07}{52.6}$	$\frac{2.28}{57.9}$	$\frac{5.625}{142.88}$	$\frac{6.03}{153.2}$
10EP1	$\frac{6.62}{168.1}$	$\frac{2.07}{52.6}$	$\frac{2.78}{70.6}$	$\frac{5.625}{142.88}$	$\frac{6.03}{153.2}$
10EP3	$\frac{5.35}{135.9}$	$\frac{2.07}{52.6}$	$\frac{2.78}{70.6}$	$\frac{5.625}{142.88}$	$\frac{6.03}{153.2}$
20EP1, 20VP1	$\frac{4.95}{125.7}$	$\frac{2.27}{57.7}$	$\frac{1.8}{45.7}$	$\frac{4.063}{103.2}$	$\frac{4.47}{113.5}$
20EP6, 20VP6	$\frac{5.09}{127.3}$	$\frac{2.25}{57.2}$	$\frac{1.78}{45.2}$	$\frac{4.063}{103.2}$	$\frac{4.46}{129.3}$

† $\pm .188$
 ± 4.78

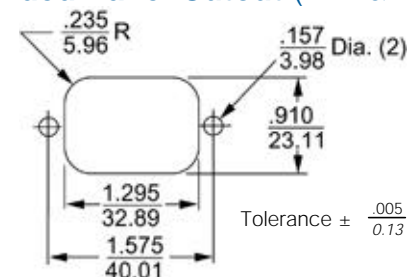
Pricing

Consult your local Corcom sales representative for pricing.

Part No.	Part No.
3EP1	10EP1
3EP3	10EP3
3EP7	20EP1
3EP7M	20EP6
6EP1	20VP1
6EP3	20VP6

Line Cord No. GA400

Recommended Panel Cutout (EP7 & EP7M)



Panel cutout (Back mount)